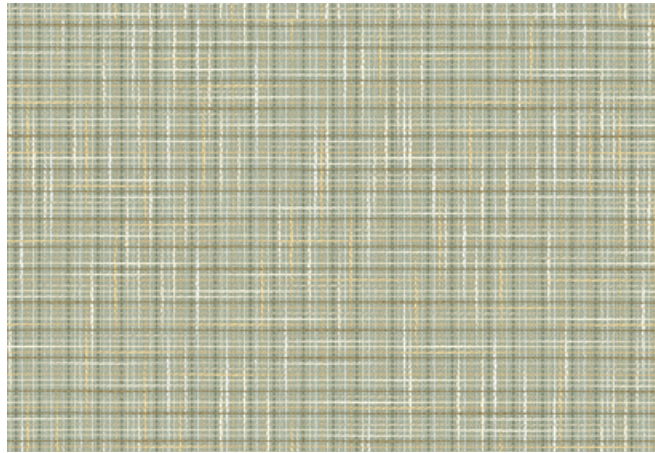
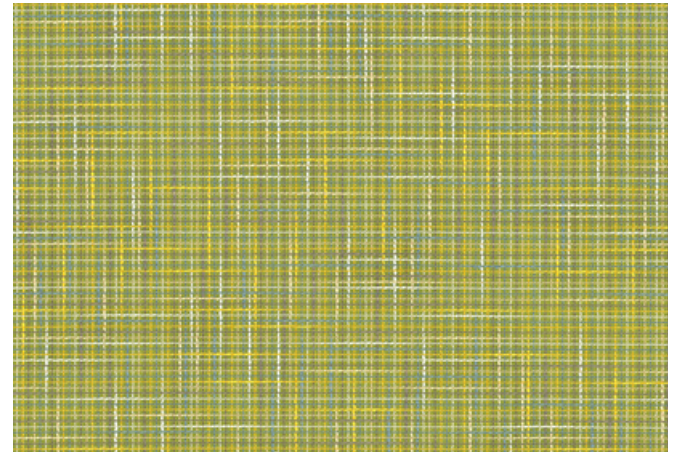


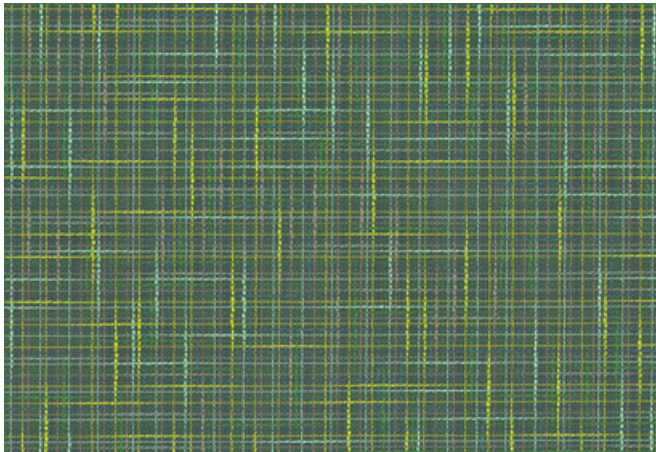
001 Enchant



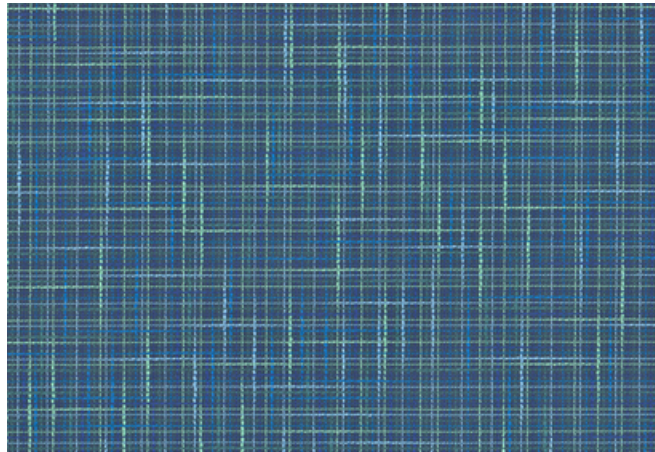
002 Matinee



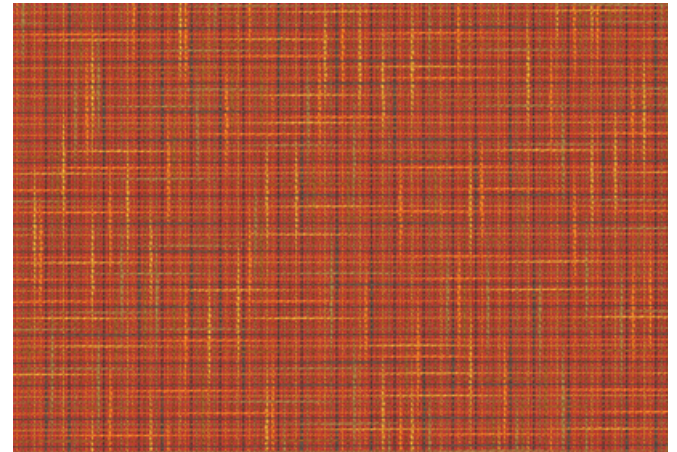
003 Picnic



004 Dragonfly



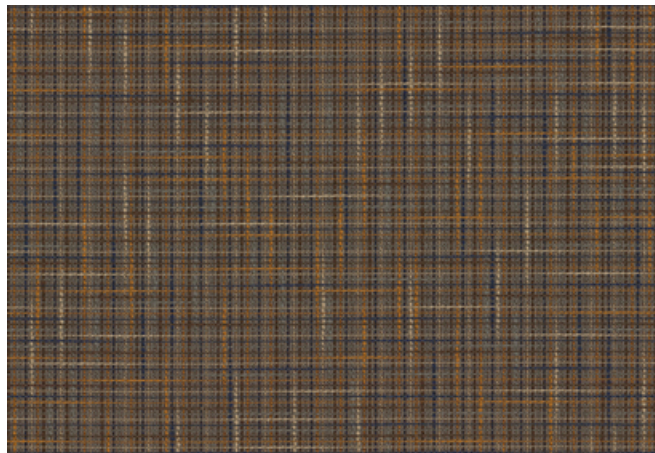
005 Getaway



006 Venus



007 Night Owl



008 Lounge

Application

Systems, Upholstered Walls, Walls

Characteristics

Content: 63% Polyester, 37% Post-Consumer Recycled Polyester

Finish: Stain Repellent

Backing: Acrylic

Width: 52" (132cm)

Bolt Size: 60 yards (55 m)

Weight: 14.8 oz/ly (500 gr/lm)

Traffic: High Traffic

Country of Origin: USA

Note on Mold: Intended for use in buildings designed and maintained to avoid moisture on or within walls.

Application must conform to current Installation Guidelines included in each shipment or available at maharam.com.

Price

\$52.50 / C\$79.50 (FOB destination)

C\$75.00 (FOB origin)

Testing

Acoustics: ASTM C423, 0.95 NRC

Flammability: ASTM E84 Adhered

ASTM E84 Unadhered

CAN ULC S102 Adhered

Lightfastness: AATCC 16.3, 40+ hours



Maintenance

W/S/B-Clean with water-based cleanser; mild, water-free dry cleaning solvent, or diluted household bleach.

Environmental

Greenguard Gold Certified

GRS Certified Content

Contains Recycled Content

FR Free

Warranty

10 years. See Terms and Conditions for more information.

© 2021 Knoll, Inc.

Last updated May 1, 2025