

## Specifications

Query

650095

**maharam**

### Application

Floors

### Characteristics

Content: 100% Wool

Finish: None

Backing: Jute / Polyester / Latex

Bolt Size: 30 yards (27 m)

Weight: 10.3 oz/ly (300 gr/lm)

Traffic: High Traffic with Casters for Stairs and Corridors

Country of Origin: USA

Note: Variations in color and texture are inherent to this textile.

### Price

\$304.00 / C\$438.00 (FOB destination) / C\$434.50 (FOB origin)

### Maintenance

X-Vacuum or brush lightly to remove surface dust.



### Testing

Flammability: ASTM D2859/CPSC FF 1-70/FF 2-70/16 CFR1630

JFRA 45°

Lightfastness: AATCC 16.3, 40+ hours

**Environmental**

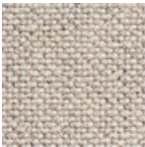
LBC Red List Free  
Contains Bio-Based Content  
FR Free  
Free of Intentionally Added PFAS

**Warranty**

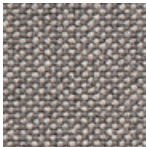
2 years.

© 2019 Maharam

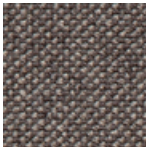
Complete product information at [maharam.com](https://maharam.com)  
800.645.3943



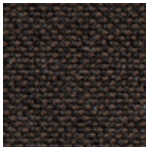
001 Estate



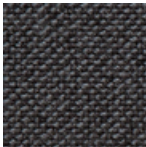
002 Walkway



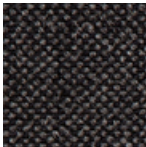
003 Herd



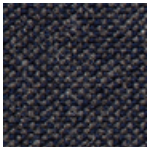
004 Molasses



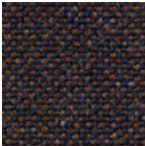
005 Ponder



006 Static



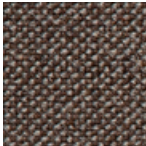
007 Vessel



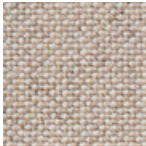
008 Tread



009 Chocolate



010 Brunette



011 Daylight