

Specifications

Rail

466535

maharam

Application

Seating

Note: This textile is available as a made-to-order pillow.

Characteristics

Content: 84% Post-Consumer Recycled Polyester, 16% Solution-Dyed Nylon

Finish: Stain Repellent

Additional Finishes Available: Alta, Alta Food & Beverage, Antimicrobial Stain Resistant Finish with Impermeable Backing, Crypton, Nanotex, Nanotex with Impermeable Barrier

Backing: Acrylic

Width: 57" (145cm)

Repeat: 27 3/4" V, 14 3/4" H

(70cm V, 37cm H), Suitable for non-match application

Bolt Size: 30 yards (27 m)

Weight: 18.7 oz/ly (600 gr/lm)

Country of Origin: USA

Price

\$81.50 / C\$120.00 (FOB destination) / C\$116.50 (FOB origin)

Maintenance

W/S/B-Clean with water-based cleanser; mild, water-free dry cleaning solvent, or diluted household bleach.

☒ △ ☒ ☒ Ⓜ

Testing

Abrasion: ASTM D4157, 100,000 double rubs Wyzenbeek

Note: Abrasion test results exceeding ACT Performance Guidelines are not an indicator of product lifespan.

Multiple factors affect fabric durability and appearance retention.

Flammability: CAL 117-2013

Lightfastness: AATCC 16.3, 40+ hours

A ☀ 🔥 💧 ☆

Specifications

Rail

466535

maharam

Environmental

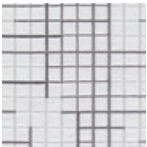
Greenguard Gold Certified
REACH Compliant
Contains Recycled Content
FR Free

Warranty

5 years.

© 2020 Maharam

Complete product information at maharam.com
800.645.3943



001 Formation



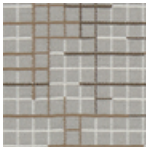
002 Propel



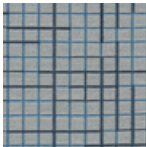
003 Serpent



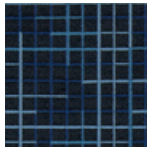
004 Brash



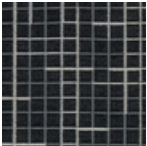
005 Benchmark



006 Karaoke



007 Taboo



008 Proverb