

Specifications
Repeat Dot Print
by Hella Jongerius
462130

Application

Seating

Note: Available in multiples of 1 panel only.

Characteristics

Content: 55% Cotton, 24% Polyester, 21% Rayon

Finish: None

Backing: None

Width: 55" (140cm)

Repeat: 86 1/2" V, 4" H

(220cm V, 10cm H)

Bolt Size: 59 yards (54 m)

Weight: 28.5 oz/ly (900 gr/lm)

Country of Origin: Switzerland

Price

\$611.00 / C\$876.50 (FOB destination) / C\$873.00 (FOB origin)

Maintenance

S-Clean with mild, water-free dry cleaning solvent.

**Testing**

Abrasion: ASTM D4157, 100,000 double rubs Wyzenbeek

Note: Abrasion test results exceeding ACT Performance Guidelines are not an indicator of product lifespan.

Multiple factors affect fabric durability and appearance retention.

Flammability: AS/NZS 3837 Unadhered

Note: This textile does not meet flammability requirements for contract use without the use of a CAL 117 compliant barrier material.

Lightfastness: AATCC 16.3, 40+ hours



Specifications
Repeat Dot Print
by Hella Jongerius
462130

Environmental

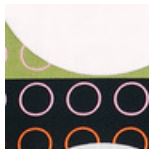
Greenguard Gold Certified
Healthier Hospitals Compliant
LBC Red List Free
REACH Compliant
Contains Bio-Based Content
FR Free
Free of Intentionally Added PFAS

Warranty

3 years.

© 2002 Maharam

Complete product information at maharam.com
800.645.3943



001 Unique