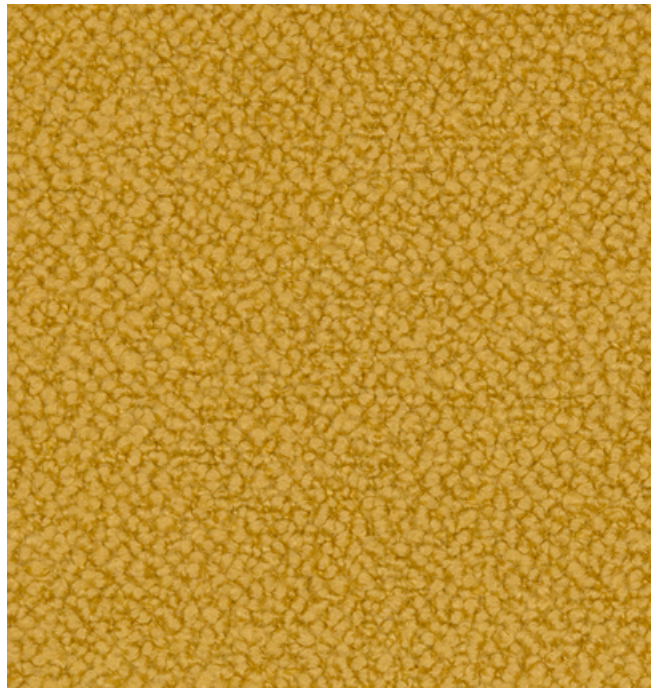




001 Apogee



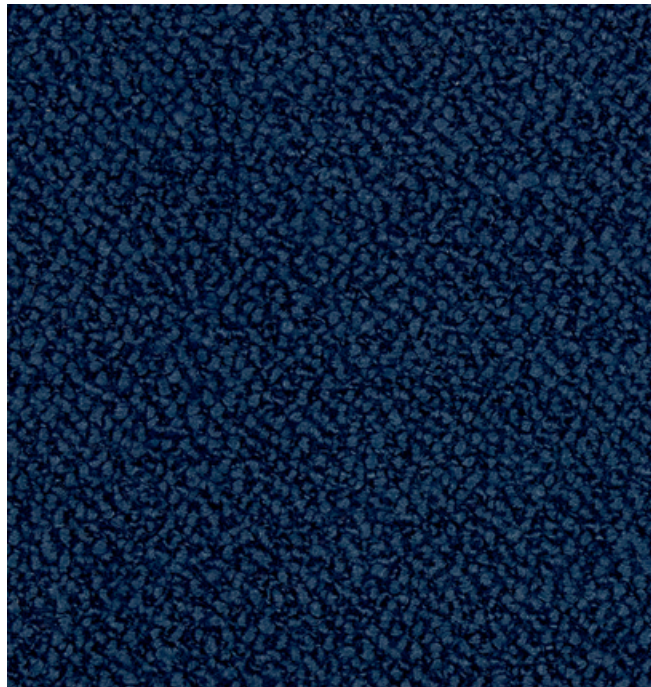
002 Beeswax



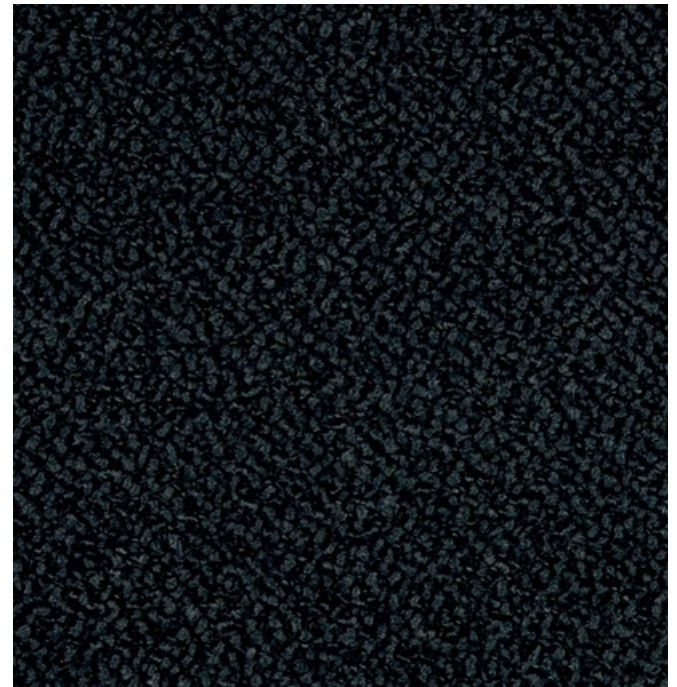
003 Bridal



004 Moonlight



005 Boatyard



006 Bottomless

466520 Roam

**maharam**



Application

Seating  
Note: This textile is intended for residential use. This textile is available as a made-to-order pillow.

Characteristics

Content: 51% Rayon, 29% Wool, 9% Cotton, 9% Linen, 2% Nylon  
Finish: None  
Additional Finishes Available: Alta, Alta Food & Beverage, Nanotex, Nanotex with Impermeable Barrier, Stain Repellent Finish  
Backing: None  
Width: 49" (124cm)  
Bolt Size: 22 yards (20 m)  
Weight: 37.1 oz/ly (1200 gr/lm)  
Country of Origin: Belgium

Price

\$239.00 / C\$345.00 (FOB destination)  
C\$341.50 (FOB origin)

Testing

Abrasion: ASTM D4966, 70,000 cycles Martindale  
Note: Abrasion test results exceeding ACT  
Performance Guidelines are not an indicator of product lifespan. Multiple factors affect fabric durability and appearance retention.

Flammability: CAL 117-2013

Lightfastness: AATCC 16.3, 40+ hours



Maintenance

S-Clean with mild, water-free dry cleaning solvent.

Environmental

Greenguard Gold Certified  
Greenguard Certified  
Healthier Hospitals Compliant  
LBC Red List Free  
Contains Bio-Based Content  
FR Free  
Free of Intentionally Added PFAS

Warranty

None. See Terms and Conditions for more information.

© 2020 Maharam

Last updated August 18, 2025