

Specifications

Scuba

464930

maharam

Application

Seating

Upholstered Walls require additional finishes.

Not approved for pool areas.

Note: Use with discretion in food service environments, as strict adherence to cleaning protocol is required.

Characteristics

Content: 100% Polyurethane

Finish: None

Backing: Polyester

Width: 54" (137cm)

Bolt Size: 35 yards (32 m)

Weight: 20 oz/ly (600 gr/lm)

Country of Origin: Korea

Price

\$59.50 / C\$89.50 (FOB destination) / C\$85.00 (FOB origin)

Maintenance

W/B-Clean with water-based cleanser or diluted household bleach.



Testing

Abrasion: ASTM D4966, 200,000 cycles Martindale

Note: Abrasion test results exceeding ACT Performance Guidelines are not an indicator of product lifespan.

Multiple factors affect fabric durability and appearance retention.

Flammability: AS/NZS 1530.3

AS/NZS 3837 Unadhered

BS 5852 Crib 5*

CAL 117-2013

EN 1021-1*

EN 1021-2*

GB/T 17591*

NFPA 260

UNI 9175*

*passes with additional treatment

Lightfastness: AATCC 16.3, 200+ hours



Specifications
Scuba
464930

maharam

Environmental

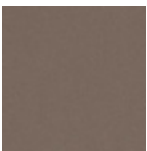
Greenguard Gold Certified
Healthier Hospitals Compliant
LBC Red List Free
REACH Compliant
Produced in an ISO 14001 Facility
FR Free
Free of Intentionally Added PFAS

Warranty

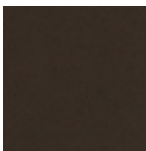
5 years.

© 2007 Maharam

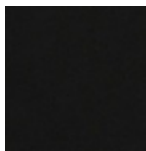
Complete product information at maharam.com
800.645.3943



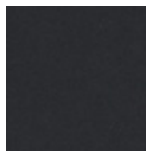
005 Chinchilla



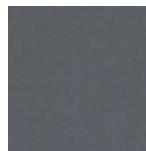
006 Mahogany



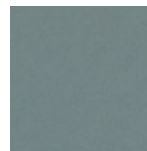
007 Jet



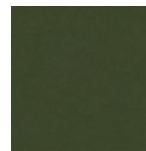
008 Charcoal



009 Dolphin



010 Drizzle



012 Conifer



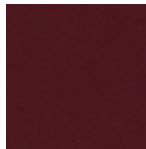
015 Tourmaline



016 Sapphire



017 Electric



020 Cabernet



021 Brick



022 Coral



023 Autumn