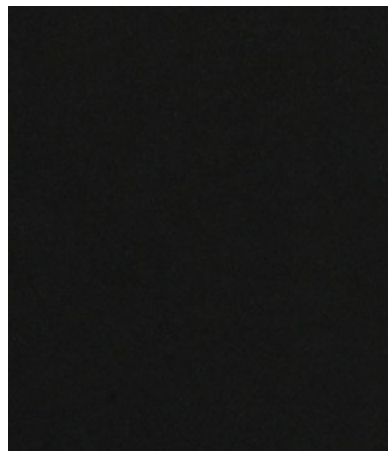




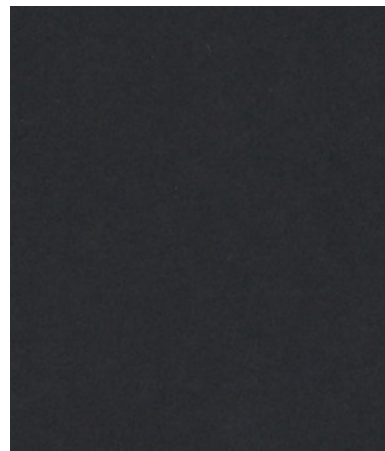
005 Chinchilla



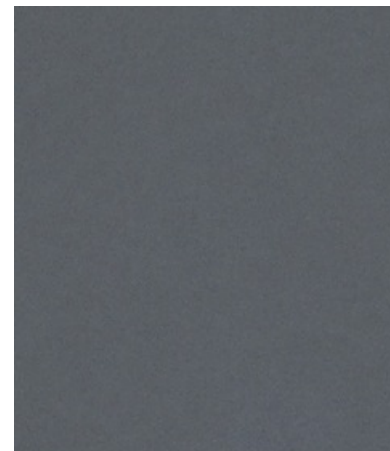
006 Mahogany



007 Jet



008 Charcoal



009 Dolphin



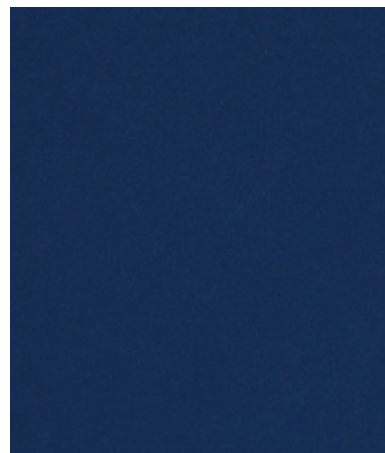
010 Drizzle



012 Conifer



015 Tourmaline



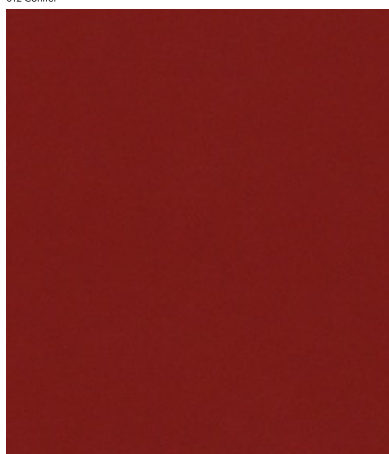
016 Sapphire



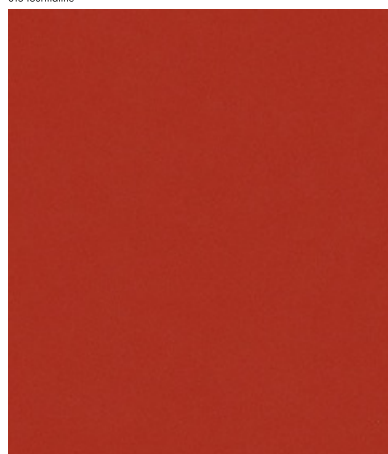
017 Electric



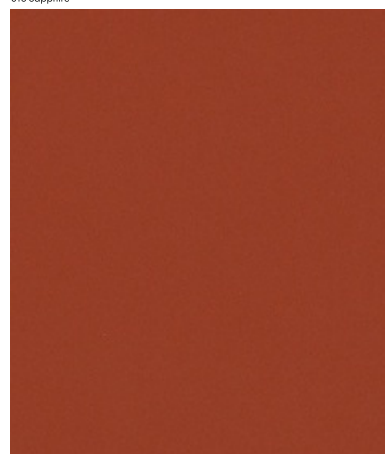
020 Cabernet



021 Brick



022 Coral



023 Autumn

464930 Scuba

maharam

Application

Seating
Upholstered Walls require additional finishes.
Not approved for pool areas.
Note: Use with discretion in food service environments, as strict adherence to cleaning protocol is required.

Characteristics

Content: 100% Polyurethane
Finish: None
Backing: Polyester
Width: 54" (137cm)
Bolt Size: 35 yards (32 m)
Weight: 20 oz/ly (600 gr/lm)
Country of Origin: Korea

Price

\$59.50 / C\$89.50 (FOB destination)
C\$85.00 (FOB origin)

Testing

Abrasion: ASTM D4966, 200,000 cycles Martindale
Note: Abrasion test results exceeding ACT Performance Guidelines are not an indicator of product lifespan. Multiple factors affect fabric durability and appearance retention.

Flammability: AS/NZS 1530.3
AS/NZS 3837 Unadhered
BS 5852 Crib 5*
CAL 117-2013
EN 1021-1*
EN 1021-2*
GB/T 17591*
NFPA 260
UNI 9175*
*passes with additional treatment

Lightfastness: AATCC 16.3, 200+ hours



Maintenance

W/B-Clean with water-based cleanser or diluted household bleach.
☒ △ ☒ ☒ Ⓜ

Environmental

Greenguard Gold Certified
Healthier Hospitals Compliant
LBC Red List Free
REACH Compliant
Produced in an ISO 14001 Facility
FR Free
Free of Intentionally Added PFAS

Warranty

5 years. See Terms and Conditions for more information.

© 2007 Maharam

Last updated May 1, 2025