

Specifications
Shagreen City Lights
700088

Application

Seating

Note: This leather can be used for aviation.

Characteristics

Content: 100% Leather

Finish: PFAS-Free Protective Topcoat

Backing: None

Dye Method: Transparent Dye and Pigment

Repeat: 8 1/2" V, 5" H

(22cm V, 13cm H)

Weight: 2.6 oz/sf (800 gr/sm)

Hide Size: 25-30 square feet (2.32-2.79 square meters)

Hide Thickness: 1.2-1.3 millimeters

Leather Type: Embossed

Hide Origin: Europe

Country of Origin: Italy

Note: This material exhibits natural markings and inherent color and textural variations. Plate lines every 24".

Price

Contact your sales representative for pricing.

Maintenance

Professional cleaning recommended.

Testing

Abrasion: ASTM D7255, 1-2 @ 1,000 Cycles

Flammability: BS 5852 Crib 5*

CAL 117-2013

*passes with additional treatment

Note: This material will lighten with prolonged exposure to heat or sunlight.

Specifications
Shagreen City Lights
700088

Environmental

Greenguard Gold Certified
Healthier Hospitals Compliant
LBC Red List Free
REACH Compliant
Produced In A Leather Working Group Silver Certified Facility
FR Free
Free of Intentionally Added PFAS

Warranty

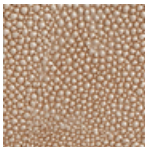
None.

© 2024 Edelman

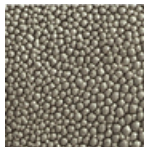
Complete product information at maharam.com
800.645.3943



100 White



101 Cafe Latte



102 Smoke



108 Black