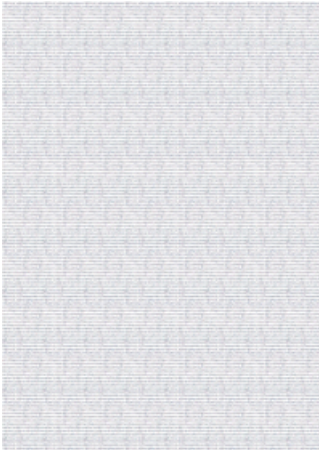
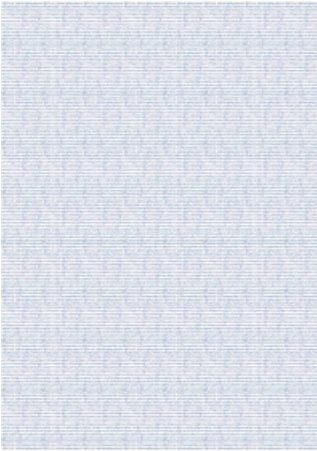


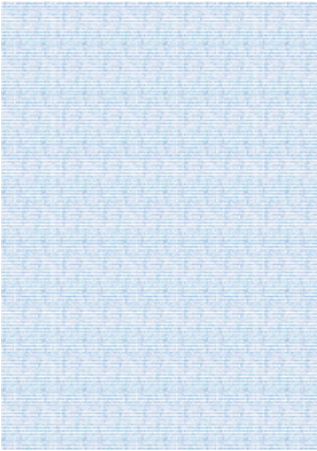
002 Chroma



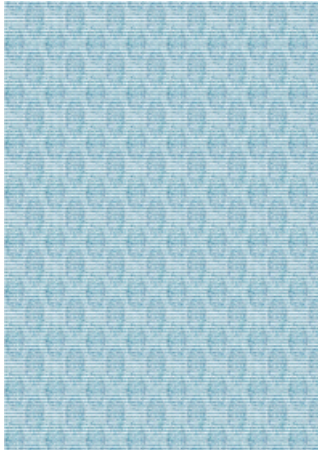
003 Minimal



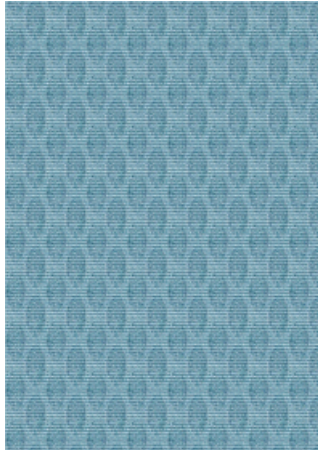
004 Prince



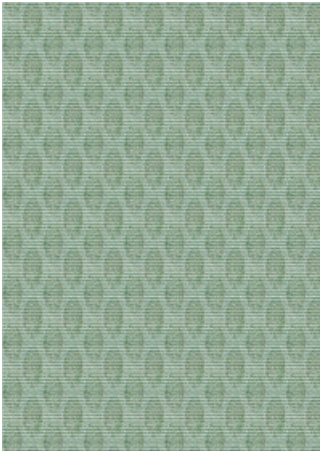
005 Reverb



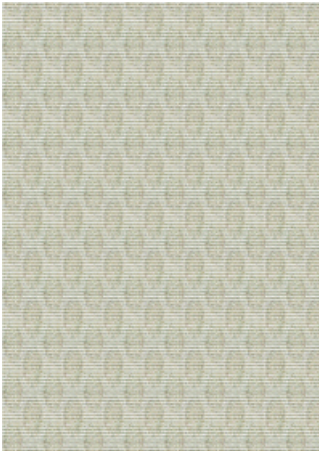
006 Airspace



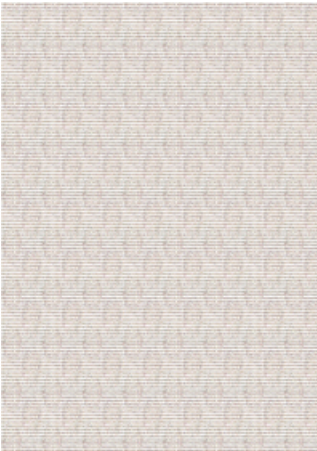
007 Soprano



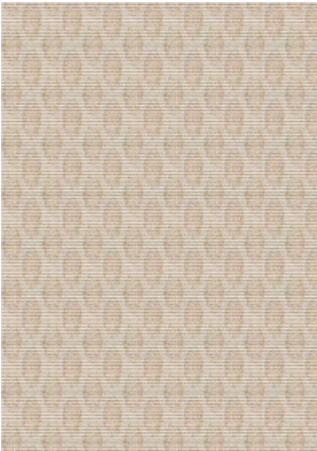
009 Cypress



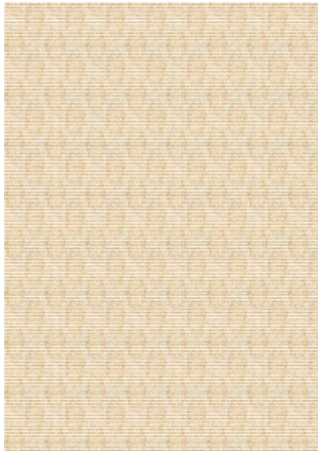
011 Bullfrog



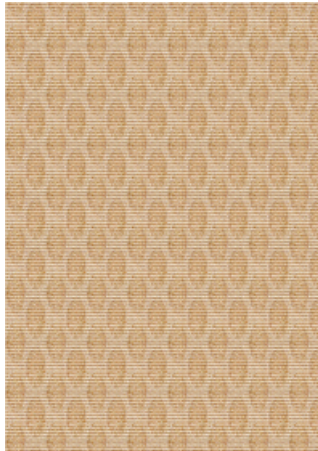
012 Marmot



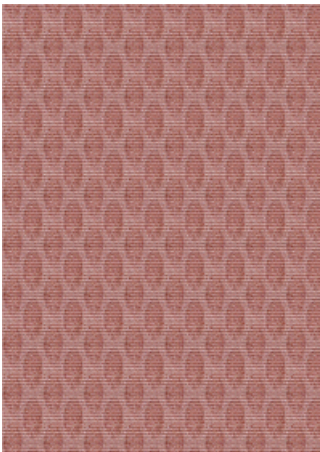
013 Merino



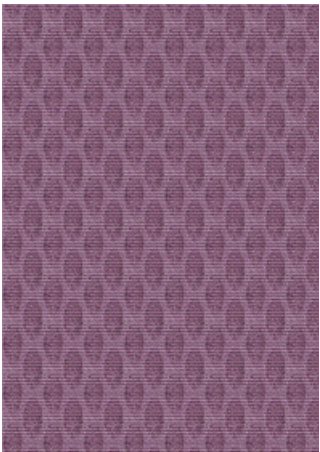
014 Streusel



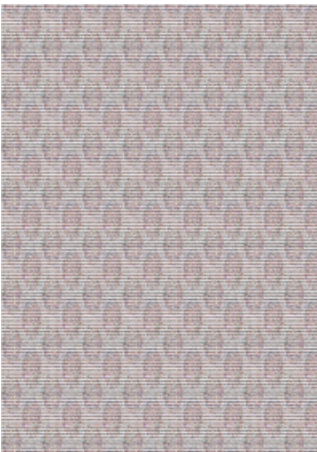
015 Tawny



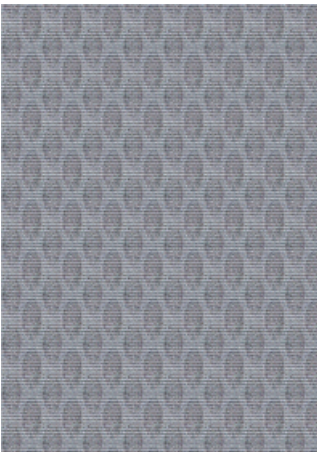
016 Mambo



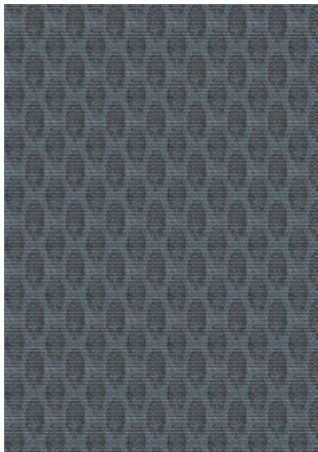
017 Rosemallow



018 Rococo



019 Ballast



020 Gondola

Application

Walls

Characteristics


Content: 100% Non-Phthalate Vinyl
Finish: None
Backing: Cotton Osnaburg
Width: 52" (132cm)
Repeat: Non-match
Bolt Size: 27 yards (25 m)
Class: Type III
Weight: 35 oz/ly (1100 gr/lm)
Traffic: High Traffic
Country of Origin: USA
Note on Mold: Intended for use in buildings designed and maintained to avoid moisture on or within walls.
Application must conform to current Installation Guidelines included in each shipment or available at maharam.com.

Price


\$39.00 / C\$59.25 (FOB destination)
C\$55.75 (FOB origin)

Testing

Flammability: ASTM E84 Adhered

Lightfastness: AATCC 16.3, + hours


Maintenance

W-Clean with water-based cleanser.


Environmental

FR Free
Free of Intentionally Added PFAS
Non-Phthalate Vinyl

Warranty

10 years. See Terms and Conditions for more information.

© 2020 Maharam

Last updated May 17, 2025