



001 Retrograde



002 Masa



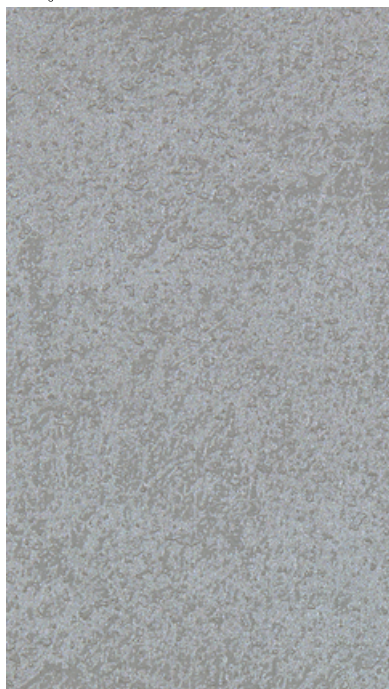
003 Sanctuary



004 Fluff



005 Bravado



006 Antiquity



007 Flora



008 Orbital



009 Vicuna



010 Tiramisu

300038 Sinter

maharam

Application

Walls

Characteristics


Content: 70% Cellulose, 30% Polyester
Finish: PFAS-Free Water Repellent
Backing: Cellulose / Polyester
Width: 54" (137cm)
Bolt Size: 55 yards (50 m)
Weight: 9.7 oz/ly (300 gr/lm)
Traffic: Moderate Traffic
Country of Origin: Netherlands
Note: This product uses iridescent inks which produce subtle variations in color when viewed from different angles and under different light sources.
Note on Mold: Intended for use in buildings designed and maintained to avoid moisture on or within walls.
Application must conform to current Installation Guidelines included in each shipment or available at maharam.com.

Price


\$44.50 /

Testing

Flammability: ASTM E84 Adhered
EN 13501 Adhered

Lightfastness: AATCC 16.3, 40+ hours


Maintenance

X-Vacuum or brush lightly to remove surface dust.


Environmental

Greenguard Gold Certified
Healthier Hospitals Compliant
LBC Red List Free
REACH Compliant
Contains Bio-Based Content
Contains Forest Stewardship Council (Fsc) Certified Content
FR Free
Free of Intentionally Added PFAS

Warranty

1 year. See Terms and Conditions for more information.

© 2019 Maharam

Last updated June 16, 2025