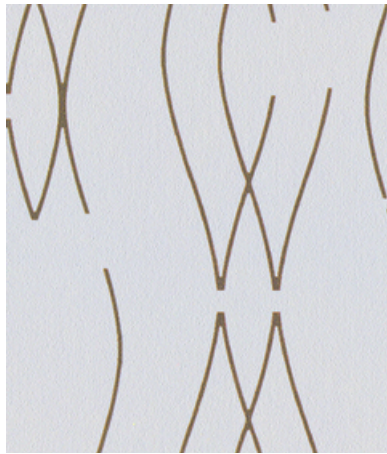


001 Piano



002 Empirical



003 Cinnamon



004 Butterscotch



005 Fireside



006 Legacy



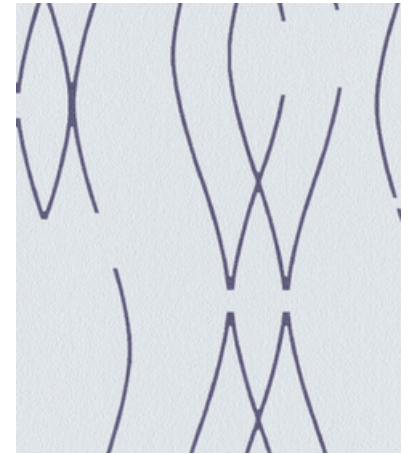
007 Demure



008 Monstera



009 Aquarius



010 Blink



011 Plunge



012 Cape



013 Cavern

300114 Ski

**maharam**

Application

Walls

Characteristics

Content: 90% Thermoplastic Olefin, 10% Post-Industrial Recycled Glass  
Finish: PFAS-Free Protective Topcoat  
Backing: Polyester / Cellulose  
Width: 52" (132cm)  
Repeat: 24" V, 51 1/2" H (61cm V, 131cm H)  
Bolt Size: 30 yards (27 m)  
Weight: 18 oz/ly (600 gr/lm)  
Traffic: High Traffic

Price


\$31.00 / C\$48.00 (FOB destination)  
C\$44.50 (FOB origin)

Testing

Flammability: ASTM E84 Adhered  
CAN ULC S102 Adhered

Lightfastness: AATCC 16.3, 200+ hours  


Maintenance

W-Clean with water-based cleanser.  


Environmental

Greenguard Gold Certified  
LBC Red List Free  
Contains Recycled Content  
FR Free  
Free of Intentionally Added PFAS

Warranty

10 years. See Terms and Conditions for more information.

© 2024 Maharam

Last updated August 2, 2025