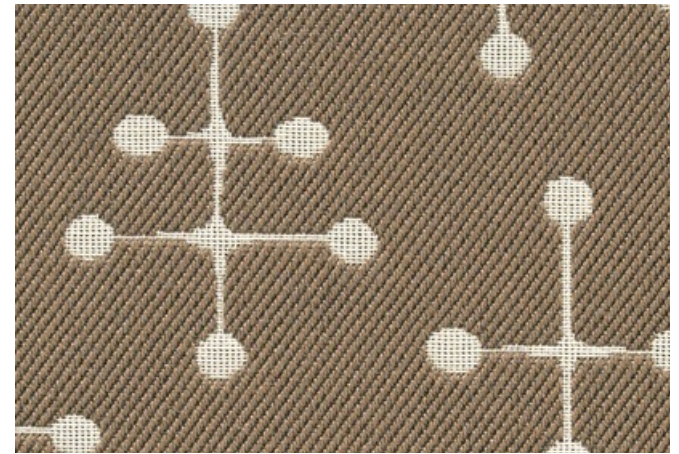


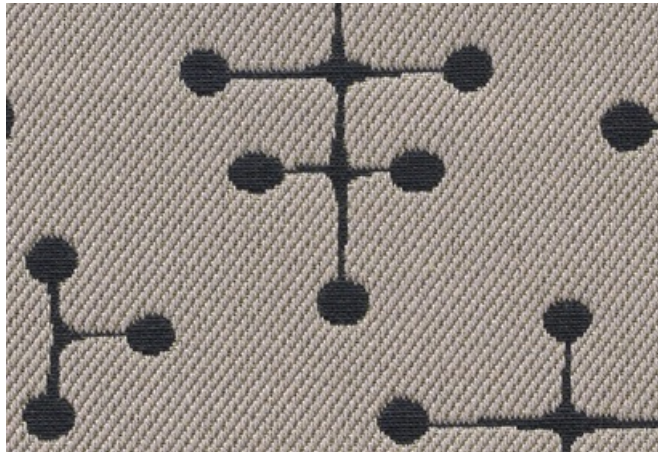
001 Document



002 Sand



003 Khaki



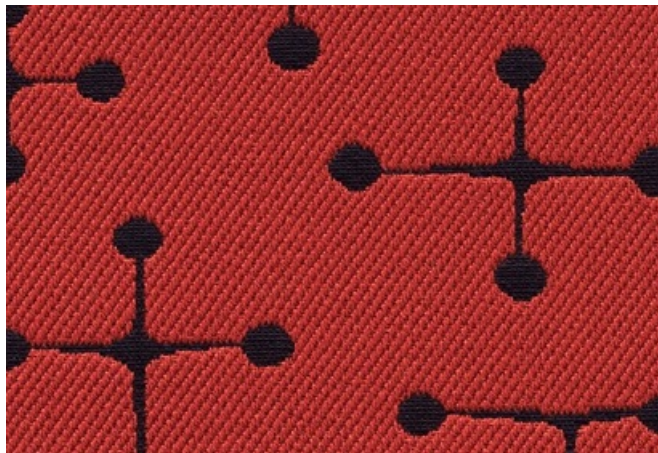
004 Taupe



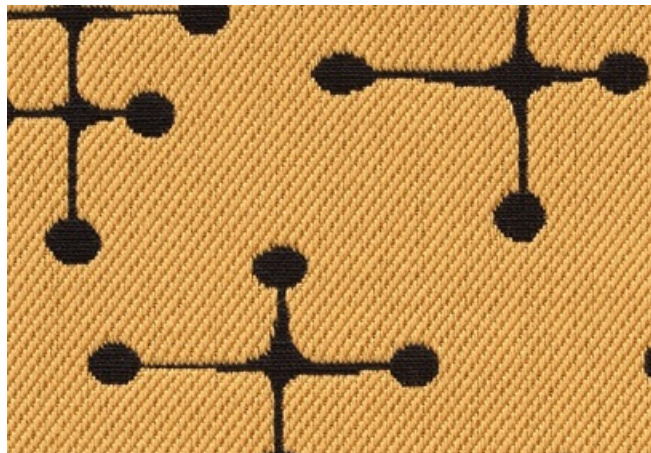
005 Charcoal



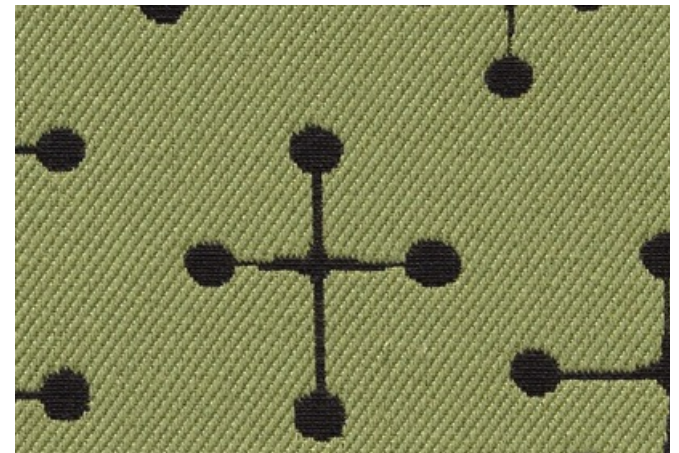
006 Document Reverse



007 Red



008 Yellow



009 Green

458320 Small Dot Pattern by Charles and Ray Eames, 1947

maharam

Design

Charles and Ray Eames, 1947

Collection

Textiles of the 20th Century

Application

Seating
Note: This textile is available as a made-to-order pillow.

Characteristics

Content: 71% Cotton, 29% Polyester
Finish: Stain Repellent
Additional Finishes Available: Alta, Alta Food & Beverage, Antimicrobial Stain Resistant Finish with Impermeable Backing, Nanotex, Nanotex with Impermeable Barrier
Backing: None
Width: 55" (140cm)
Repeat: 7 1/2" V, 12 3/4" H (19cm V, 32cm H)
Bolt Size: 38 yards (35 m)
Weight: 16.8 oz/ly (500 gr/lm)
Country of Origin: Germany

Price

\$146.00 / C\$212.25 (FOB destination)
C\$208.75 (FOB origin)


Testing

Abrasion: ASTM D4157, 42,000 double rubs Wyzenbeek
Note: Abrasion test results exceeding ACT Performance Guidelines are not an indicator of product lifespan. Multiple factors affect fabric durability and appearance retention.

Flammability: AS/NZS 1530.3
BS 5852 Crib 5*
CAL 117-2013
EN 1021-1*
EN 1021-2*
ISO 5660 Unadhered
NFPA 260
*passes with additional treatment

Lightfastness: AATCC 16.3, 40+ hours


Maintenance

S-Clean with mild, water-free dry cleaning solvent.


Environmental

Greenguard Gold Certified
Oeko-Tex Certified
REACH Compliant
Contains Bio-Based Content
FR Free

Brief

Small Dot Pattern was designed by Charles and Ray Eames for a 1947 textile competition at the Museum of Modern Art.

Warranty

3 years. See Terms and Conditions for more information.

© 2000 Eames Office. A Charles and Ray Eames Design™ fabric. All rights reserved.

Last updated August 2, 2025