

## Specifications

Sojourn

466669

**maharam**

### Application

Seating, Upholstered Walls

Note: This textile is available as a made-to-order pillow.

### Characteristics

Content: 67% Polyester, 33% Post-Consumer Recycled Polyester

Finish: None

Additional Finishes Available: Alta, Alta Food & Beverage, Crypton, Nanotex, Nanotex with Impermeable Barrier, Stain Repellent Finish

Backing: None

Width: 55" (140cm)

Repeat: 16 1/2" V, 14" H

(42cm V, 36cm H)

Bolt Size: 30 yards (27 m)

Weight: 22.7 oz/ly (700 gr/lm)

Country of Origin: USA

### Price

\$56.50 / C\$84.25 (FOB destination) / C\$80.75 (FOB origin)

### Maintenance

W/S/B-Clean with water-based cleanser; mild, water-free dry cleaning solvent, or diluted household bleach.

☒ △ ☒ ☒ Ⓜ

### Testing

Abrasion: ASTM D4157, 100,000 Double rubs

Note: Abrasion test results exceeding ACT Performance Guidelines are not an indicator of product lifespan.

Multiple factors affect fabric durability and appearance retention.

Flammability: ASTM E84 Unadhered

BS 5852 Crib 5\*

CAL 117-2013

EN 1021-1\*

EN 1021-2\*

\*passes with additional treatment

Lightfastness: AATCC 16.3, 40+ hours

☐ ☀ ☕ ☪ ☆

Specifications

Sojourn

466669

**maharam**

**Environmental**

Greenguard Gold Certified  
LBC Red List Free  
REACH Compliant  
Contains Recycled Content  
FR Free  
Free of Intentionally Added PFAS

**Warranty**

5 years: Indoor Seating  
3 years: Upholstered Walls.

© 2025 Maharam

Complete product information at [maharam.com](https://maharam.com)  
800.645.3943



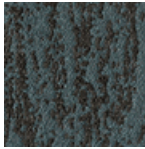
001 Slight



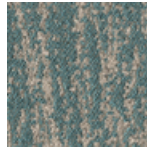
002 Cream



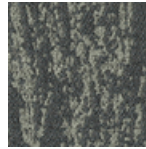
003 Granite



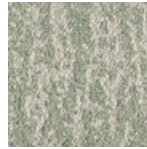
004 Plunge



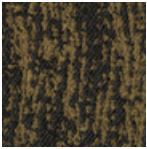
005 Tidepool



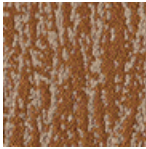
006 Storm



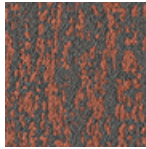
007 Aloe



008 Ecological



009 Oxidized



010 Coral