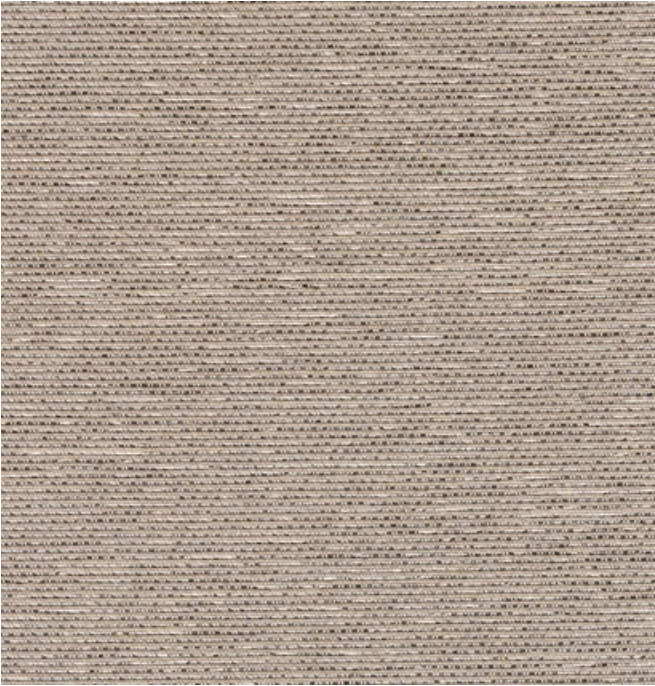


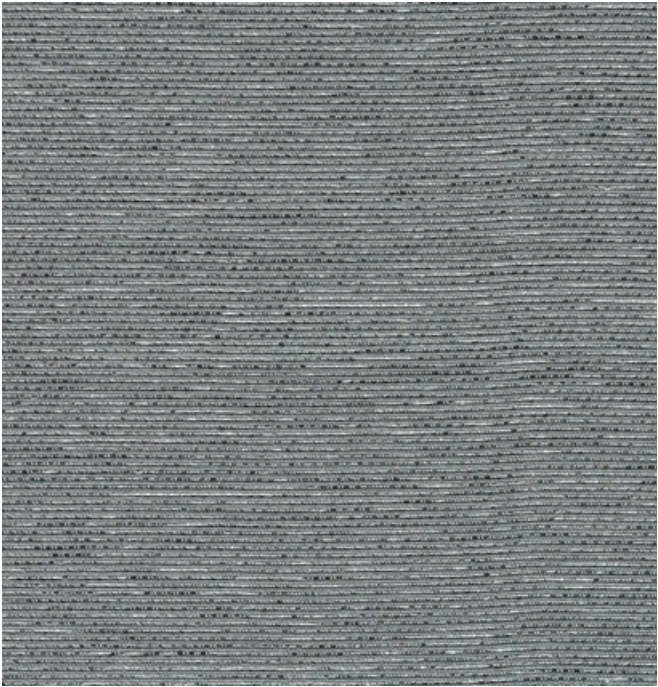
001 Chalk



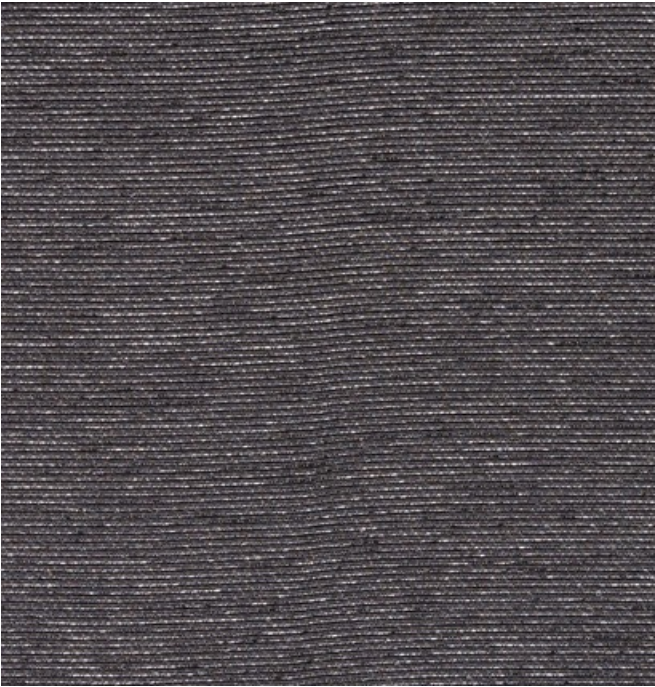
003 Wheat



004 Mica



005 Pavement



006 Graphite

Application

Systems, Upholstered Walls
Walls, Windows require additional finishes.
Note: For window application, a blackout liner is recommended.

Characteristics

Content: 100% Polyester
Finish: None
Additional Finishes Available: Flame Resistant Finish ,
Stain Repellent Finish
Backing: None
Width: 66" (168cm)
Bolt Size: 60 yards (55 m)
Weight: 11.2 oz/ly (300 gr/lm)
Country of Origin: Canada


Price

\$41.50 / C\$63.00 (FOB destination)
C\$59.50 (FOB origin)


Testing

Acoustics: ASTM C423, 0.85 NRC

Flammability: AS/NZS 3837 Unadhered
ASTM E84 Adhered*
ASTM E84 Unadhered
CAN ULC S102 Unadhered
GB 8624 Unadhered*
ISO 5660 Unadhered
NFPA 701*
*passes with additional treatment

Lightfastness: AATCC 16.3, 40+ hours


Maintenance

W/S-Clean with water-based cleanser or mild, water-free dry cleaning solvent.


Environmental

Greenguard Gold Certified
Healthier Hospitals Compliant
LBC Red List Free
REACH Compliant
Produced in an ISO 14001 Facility
FR Free
Free of Intentionally Added PFAS

Warranty

3 years. See Terms and Conditions for more information.

© 2009 Maharam

Last updated August 2, 2025