

Specifications  
Surround  
by Trove  
300149

Knoll Textiles

**Application**  
Walls

**Characteristics**

Content: 86% Thermoplastic Olefin, 14% Post-Industrial Recycled Glass

Finish: None

Backing: Polyester / Cellulose

Width: 50" (127cm)

Repeat: 60" V, 50" H  
(152cm V, 127cm H)

Bolt Size: 50 yards (46 m)

Weight: 18 oz/ly (600 gr/lm)

Traffic: High Traffic

Country of Origin: USA

Note on Mold: Intended for use in buildings designed and maintained to avoid moisture on or within walls.

Application must conform to current Installation Guidelines included in each shipment or available at [maharam.com](http://maharam.com).

**Price**

\$63.00 / C\$93.50 (FOB destination) / C\$90.00 (FOB origin)

**Maintenance**

W-Clean with water-based cleanser.

**Testing**

Flammability: ASTM E84 Adhered

CAN ULC S102 Adhered

Lightfastness: AATCC 16.3, 200+ hours



**Specifications**  
**Surround**  
**by Trove**  
**300149**

**Environmental**

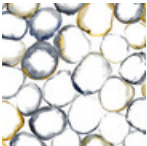
Greenguard Gold Certified  
LBC Red List Free  
Contains Recycled Content  
FR Free  
Free of Intentionally Added PFAS

**Warranty**

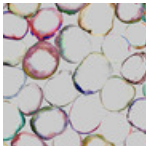
10 years.

© 2018 Knoll, Inc.

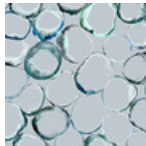
Complete product information at [knolltextiles.com](http://knolltextiles.com)  
800.645.3943



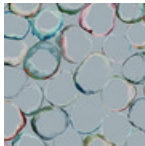
001 Comet



002 Prism



003 Oxygen



004 Kaleidoscope



005 Oasis