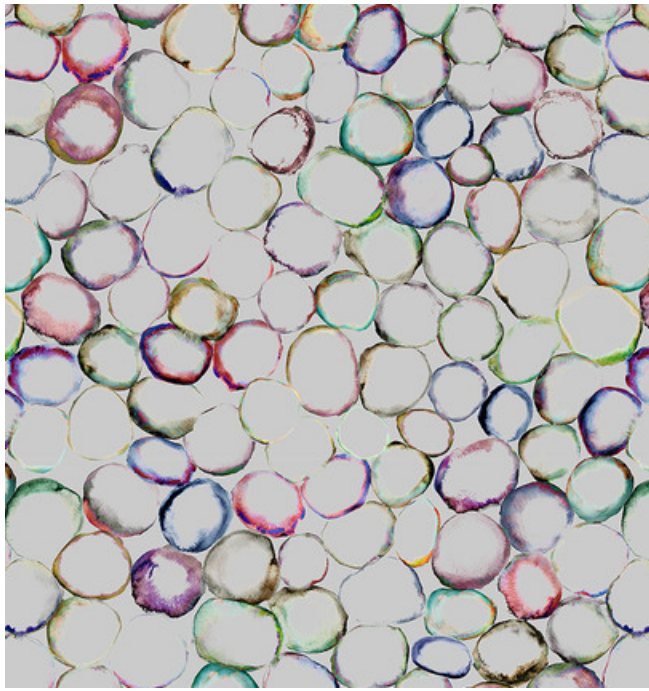
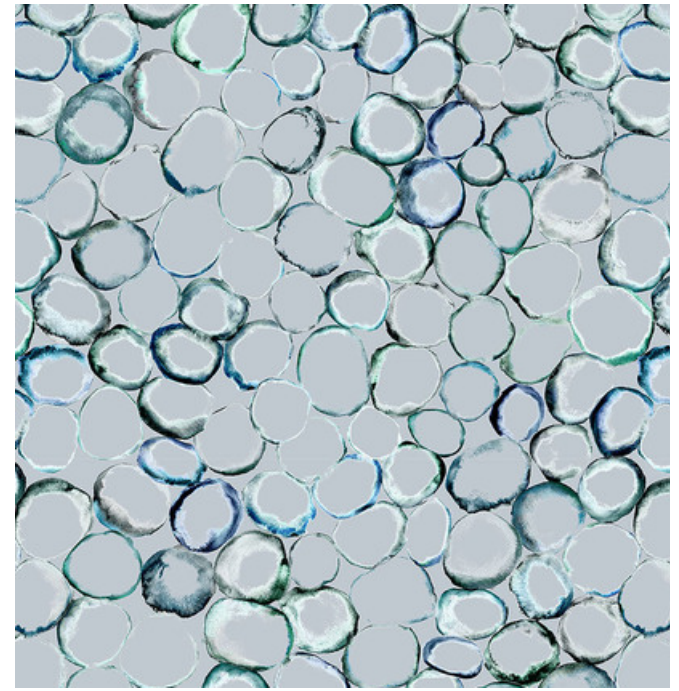


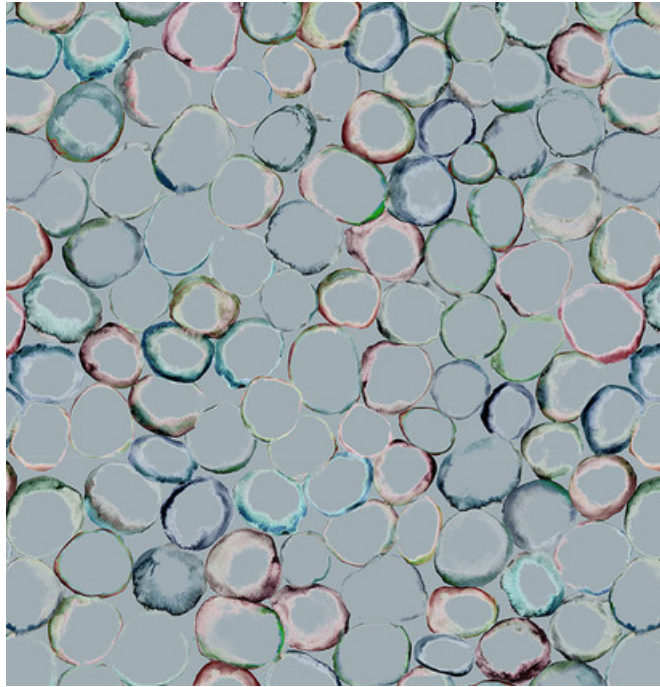
001 Comet



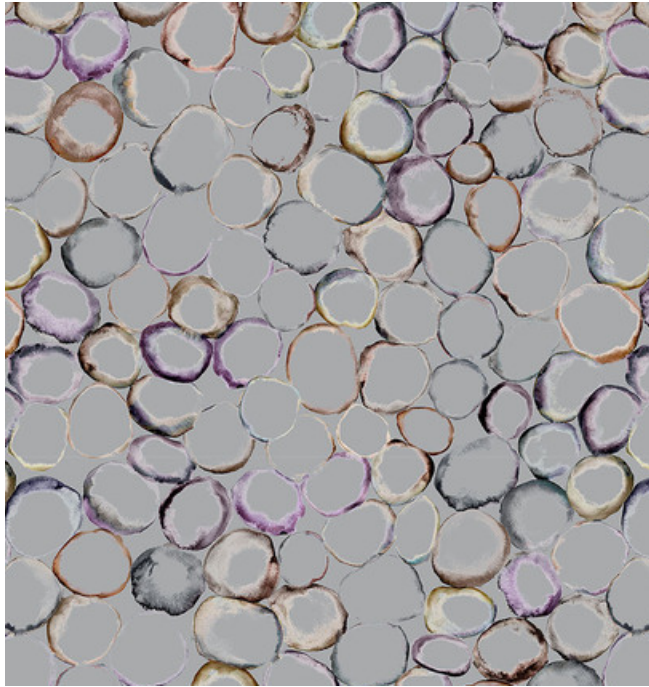
002 Prism



003 Oxygen



004 Kaleidoscope



005 Oasis

300149 Surround by Trove

Knoll Textiles

Design
Trove

Application
Walls

Characteristics
Content: 86% Thermoplastic Olefin, 14% Post-Industrial Recycled Glass
Finish: None
Backing: Polyester / Cellulose
Width: 50" (127cm)
Repeat: 60" V, 50" H
(152cm V, 127cm H)
Bolt Size: 50 yards (46 m)
Weight: 18 oz/ly (600 gr/lm)
Traffic: High Traffic
Country of Origin: USA
Note on Mold: Intended for use in buildings designed and maintained to avoid moisture on or within walls.
Application must conform to current Installation Guidelines included in each shipment or available at maharam.com.

Price
\$63.00 / C\$93.50 (FOB destination)
C\$90.00 (FOB origin)

Testing
Flammability: ASTM E84 Adhered
CAN ULC S102 Adhered

Lightfastness: AATCC 16.3, 200+ hours
☀️🔥💧🌟

Maintenance
W-Clean with water-based cleanser.

Environmental
Greenguard Gold Certified
LBC Red List Free
Contains Recycled Content
FR Free
Free of Intentionally Added PFAS

Warranty
10 years. See Terms and Conditions for more information.

© 2018 Knoll, Inc.

Last updated August 21, 2025