

Specifications
Swan
399471

maharam

Application

Walls

Characteristics

Content: 65% Cellulose, 35% Latex
Finish: PFAS-Free Protective Topcoat
Backing: None
Reference Dimension: 10' H x 20' W (305cm x 610cm)
Traffic: Moderate Traffic
Customs: Repeatable
Country of Origin: USA
Note on Mold: Intended for use in buildings designed and maintained to avoid moisture on or within walls.
Application must conform to current Installation Guidelines included in each shipment or available at maharam.com.

Price

Installation is sized, priced and produced on a project-specific basis.

Maintenance

W-Clean with water-based cleanser.



Testing

Flammability: AS/NZS 3837 Adhered
ASTM E84 Adhered
CAN ULC S102 Adhered
ISO 5660 Adhered

Lightfastness: AATCC 16.3, 40+ hours



Specifications

Swan

399471

maharam

Environmental

Greenguard Gold Certified

LBC Red List Free

Contains Bio-Based Content

FR Free

Free of Intentionally Added PFAS

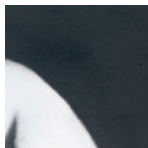
Warranty

3 years.

© 2010 Mats Gustafson, Maharam under license

Complete product information at maharam.com

800.645.3943



001