

Specifications  
Swell  
650078

**maharam**

**Application**

Floors

**Characteristics**

Content: 100% Wool

Finish: None

Backing: Jute / Polyester / Latex

Repeat: 2 1/2" V

(6cm V)

Bolt Size: 30 yards (27 m)

Weight: 9.8 oz/ly (300 gr/lm)

Traffic: High Traffic

Country of Origin: USA

Note: Variations in color and texture are inherent to this textile. Subtle shade variation is a natural effect.

**Price**

\$316.00 / C\$455.00 (FOB destination) / C\$451.50 (FOB origin)

**Maintenance**

X-Vacuum or brush lightly to remove surface dust.



**Testing**

Flammability: ASTM D2859/CPSC FF 1-70/FF 2-70/16 CFR1630

Lightfastness: AATCC 16.3, 40+ hours

Specifications  
Swell  
650078

**maharam**

**Environmental**

LBC Red List Free  
Contains Bio-Based Content  
FR Free  
Free of Intentionally Added PFAS

**Warranty**

2 years.

© 2018 Maharam.

Complete product information at [maharam.com](http://maharam.com)  
800.645.3943



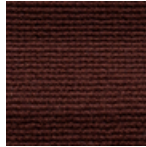
001 Heather



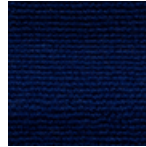
002 Subtle



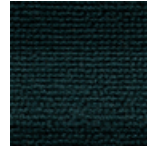
003 Villa



004 Cocoa



005 Realm



006 Forest