

Specifications

Switch

466515

maharam

Application

Seating, Upholstered Walls

Note: This textile is available as a made-to-order pillow.

Characteristics

Content: 100% Polyester

Finish: None

Additional Finishes Available: Alta, Alta Food & Beverage, Nanotex, Nanotex with Impermeable Barrier, Stain Repellent Finish

Backing: None

Width: 55" (140cm)

Bolt Size: 44 yards (40 m)

Country of Origin: Germany

Note: Weight varies on a color level. Repeat varies on a color level.

Price

\$67.00 / C\$99.25 (FOB destination) / C\$95.75 (FOB origin)

Maintenance

W/S/B-Clean with water-based cleanser; mild, water-free dry cleaning solvent, or diluted household bleach.

⊗ △ ⊠ ⊞ ⊗

Testing

Abrasion: ASTM D4157, 85,000 double rubs Wyzenbeek

Note: Abrasion test results exceeding ACT Performance Guidelines are not an indicator of product lifespan.

Multiple factors affect fabric durability and appearance retention.

Flammability: ASTM E84 Unadhered

CAL 117-2013

EN 13501 Unadhered*

*passes with additional treatment

Lightfastness: AATCC 16.3, 40+ hours

A ☀ 🔥 💧 ☆

Specifications

Switch

466515

maharam

Environmental

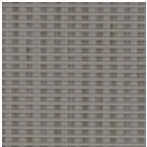
Greenguard Gold Certified
Healthier Hospitals Compliant
LBC Red List Free
REACH Compliant
Produced in an ISO 14001 Facility
FR Free
Free of Intentionally Added PFAS

Warranty

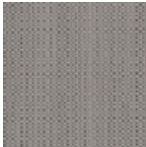
3 years: Indoor Seating
3 years: Upholstered Walls.

© 2019 Maharam

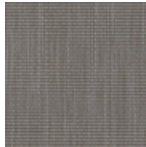
Complete product information at maharam.com
800.645.3943



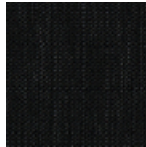
001 Edge



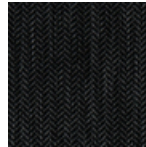
002 Titanium



004 Asteroid



006 Potent



007 Secret