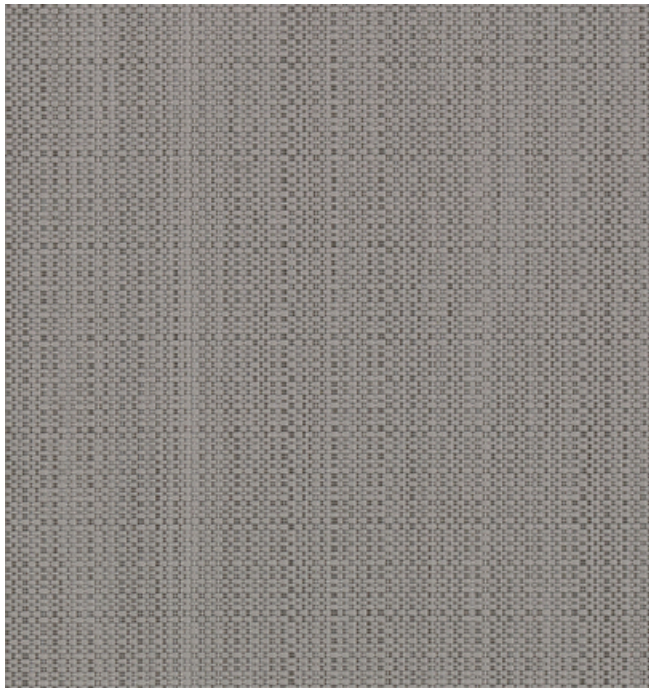
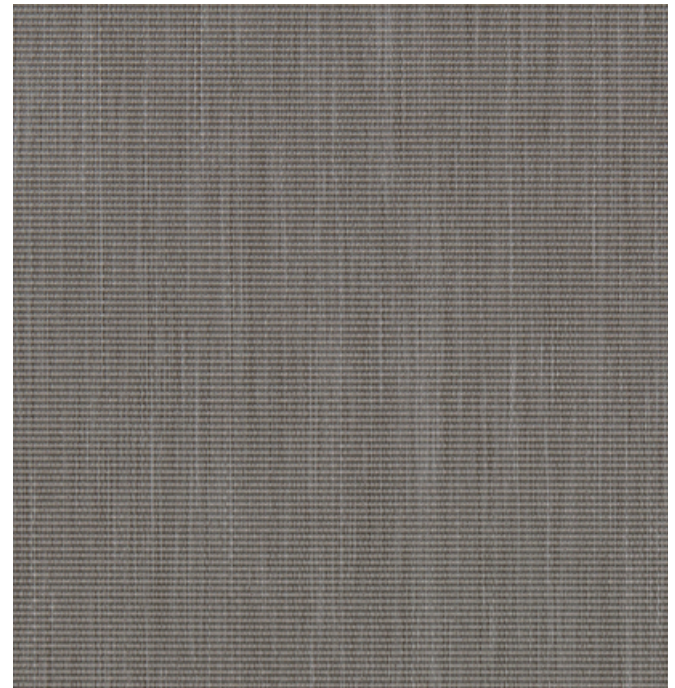


001 Edge



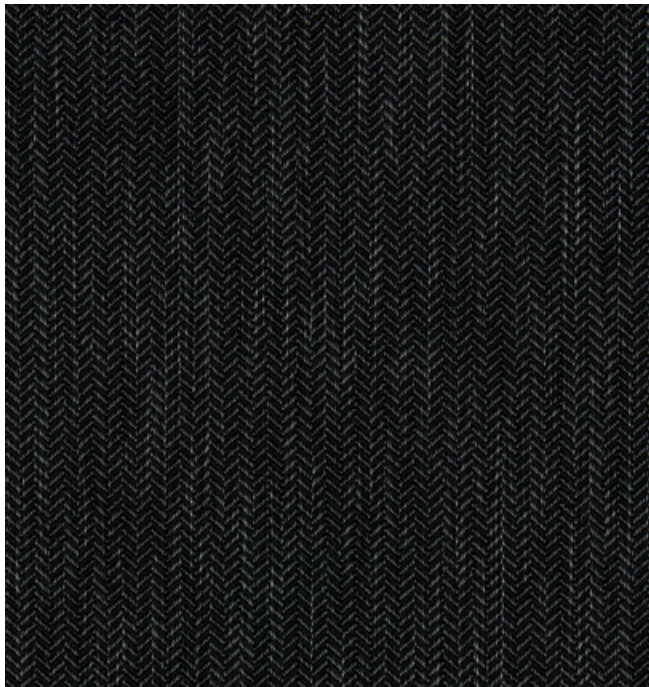
002 Titanium



004 Asteroid



006 Potent



007 Secret

466515 Switch

**maharam**



**Application**

Seating, Upholstered Walls  
Note: This textile is available as a made-to-order pillow.

**Characteristics**

Content: 100% Polyester  
Finish: None  
Additional Finishes Available: Alta, Alta Food & Beverage, Nanotex, Nanotex with Impermeable Barrier, Stain Repellent Finish  
Backing: None  
Width: 55" (140cm)  
Bolt Size: 44 yards (40 m)  
Country of Origin: Germany  
Note: Weight varies on a color level. Repeat varies on a color level.

**Price**

\$67.00 / C\$99.25 (FOB destination)  
C\$95.75 (FOB origin)


**Testing**

Abrasion: ASTM D4157, 85,000 double rubs Wyzenbeek  
Note: Abrasion test results exceeding ACT Performance Guidelines are not an indicator of product lifespan. Multiple factors affect fabric durability and appearance retention.

Flammability: ASTM E84 Unadhered  
CAL 117-2013  
EN 13501 Unadhered\*  
\*passes with additional treatment

Lightfastness: AATCC 16.3, 40+ hours  


**Maintenance**

W/S/B-Clean with water-based cleanser; mild, water-free dry cleaning solvent, or diluted household bleach.  


**Environmental**

Greenguard Gold Certified  
Healthier Hospitals Compliant  
LBC Red List Free  
REACH Compliant  
Produced in an ISO 14001 Facility  
FR Free  
Free of Intentionally Added PFAS

**Warranty**

3 years: Indoor Seating  
3 years: Upholstered Walls.  
See Terms and Conditions for more information.

© 2019 Maharam

Last updated August 2, 2025