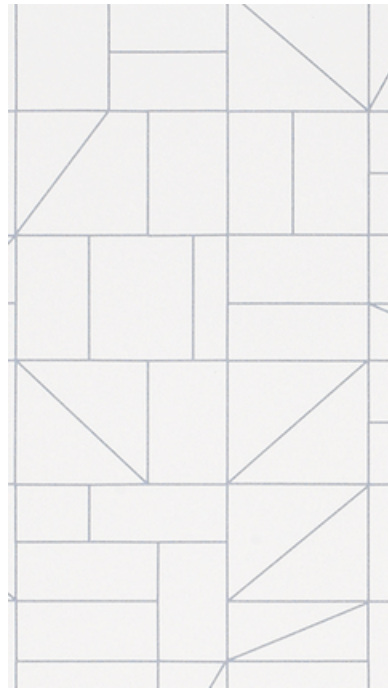


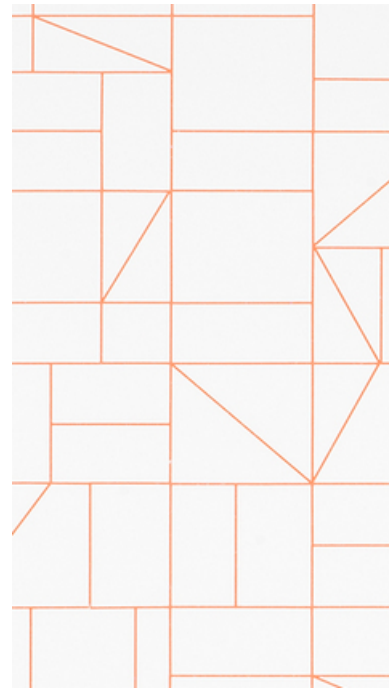
001 Black



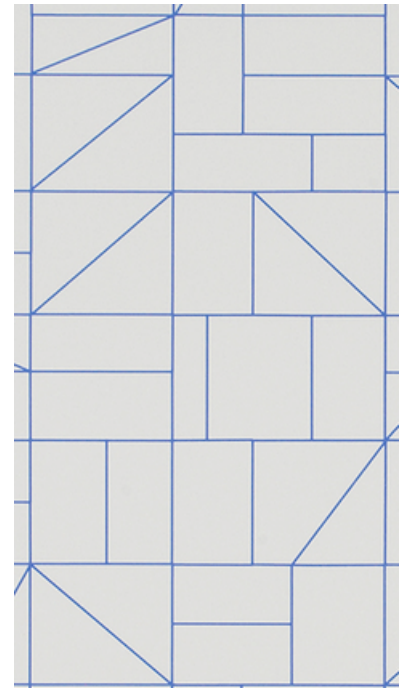
002 Gold



003 Stone



004 Tomato



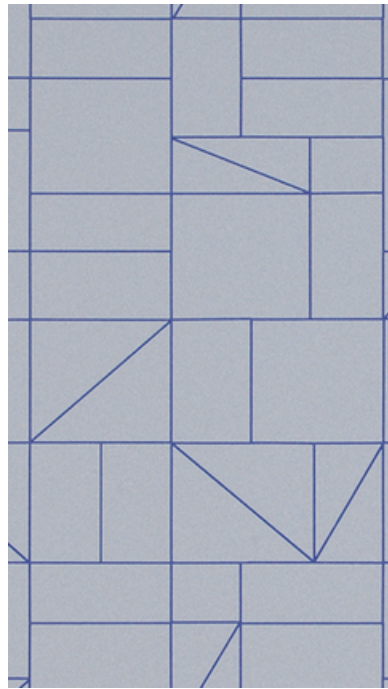
010 Cobalt



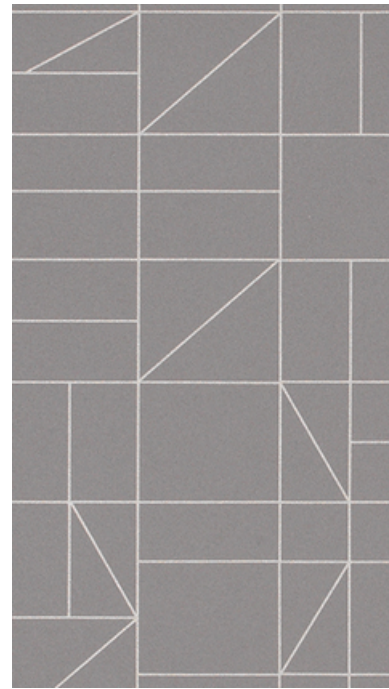
011 Capri



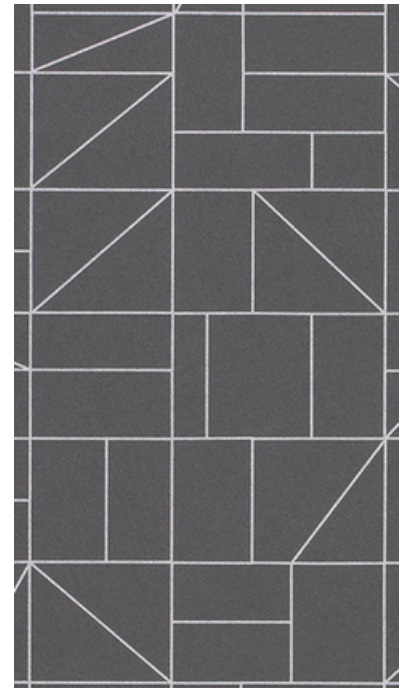
012 Haze



013 Dynamic



015 Quarry



016 Slate

399600 System

maharam

Application

Walls

Characteristics

Content: 100% Non-Phthalate Vinyl
Finish: None
Backing: Polyester / Cellulose
Width: 52" (132cm)
Repeat: 22 1/4" V, 26" H
(57cm V, 66cm H)
Bolt Size: 30 yards (27 m)
Class: Type II
Weight: 20 oz/ly (600 gr/lm)
Traffic: High Traffic
Country of Origin: USA
Note on Mold: Intended for use in buildings designed and maintained to avoid moisture on or within walls.
Application must conform to current Installation Guidelines included in each shipment or available at maharam.com.

Price

\$40.00 / C\$61.75 (FOB destination)
C\$57.25 (FOB origin)

Testing

Flammability: AS/NZS 3837 Adhered
ASTM E84 Adhered
CAN ULC S102 Adhered
EN 13501 Adhered*
GB 8624 Adhered*
ISO 5660 Adhered
*passes with additional treatment

Lightfastness: AATCC 16.3, 200+ hours



Maintenance

W-Clean with water-based cleanser.

Environmental

FR Free
Free of Intentionally Added PFAS
Non-Phthalate Vinyl

Warranty

10 years. See Terms and Conditions for more information.

© 2013 Maharam

Last updated May 1, 2025