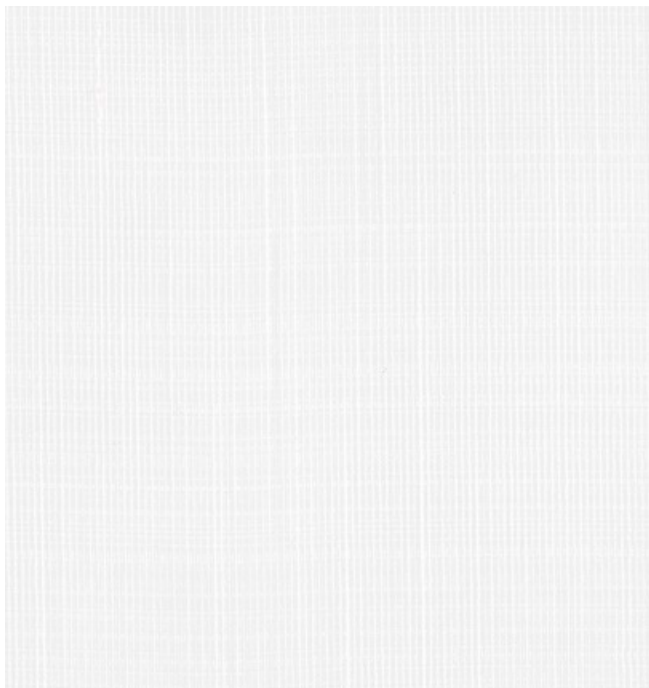


001 Void



002 Down



005 Nimble



006 Breeze



007 Clay

Application

Windows

Characteristics

Content: 100% Trevira CS Polyester
Finish: None
Backing: None
Width: 128" (325cm)
Bolt Size: 60 yards (55 m)
Weight: 3.9 oz/ly (100 gr/lm)
Country of Origin: Turkey
Note: Shown railroaded.

Price

\$80.50 / C\$118.50 (FOB destination)
C\$115.00 (FOB origin)

Testing

Flammability: AS/NZS 1530.3
BS 5867
CAN ULC S109
GB 8624
NFPA 701

Lightfastness: AATCC 16.3, 60+ hours



Maintenance

Dry clean only.

Environmental

Greenguard Gold Certified
Oeko-Tex Certified
LBC Red List Free
REACH Compliant
Free of Intentionally Added PFAS

Warranty

1 year. See Terms and Conditions for more information.

© 2015 Maharam

Last updated August 1, 2025