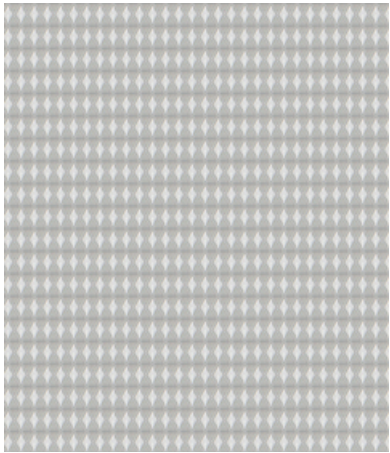
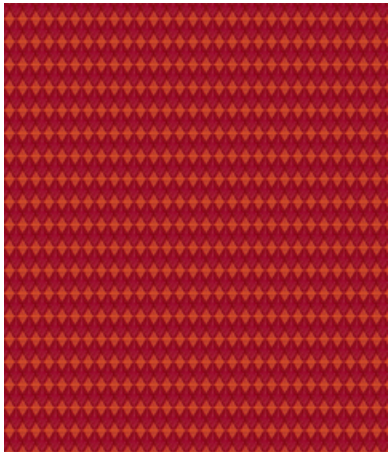


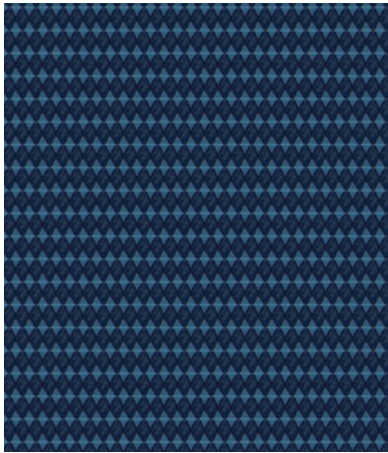
001 Muse



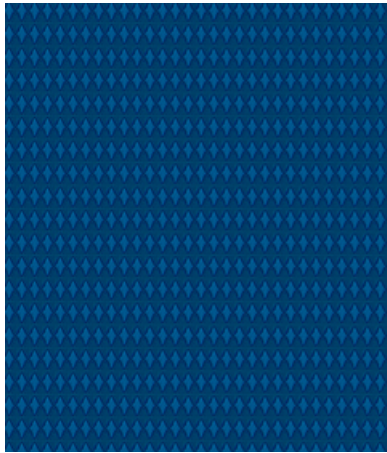
002 Hybrid



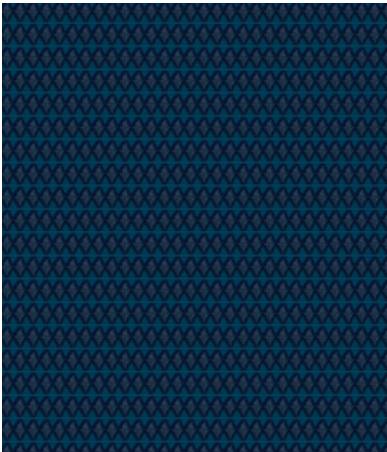
004 Zeal



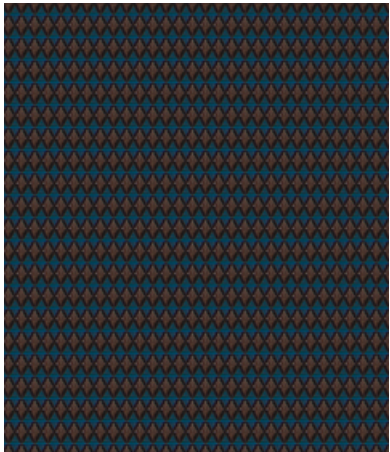
006 Argyle



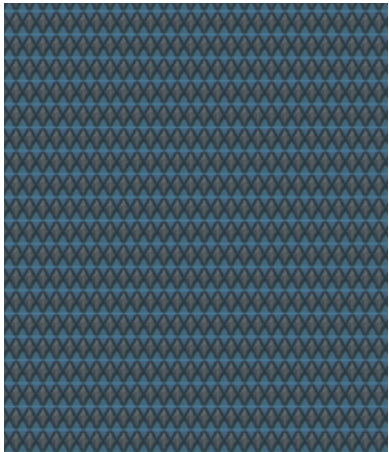
007 Continuum



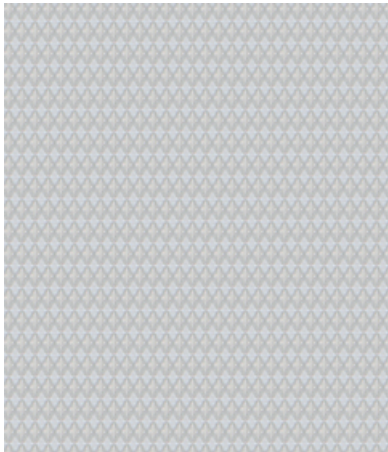
008 Crux



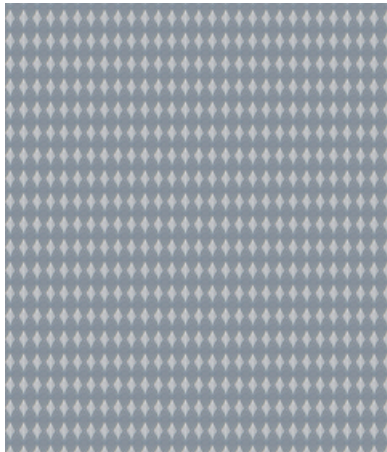
009 Brocade



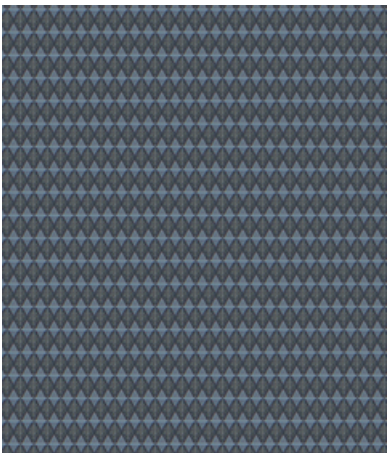
010 Duke



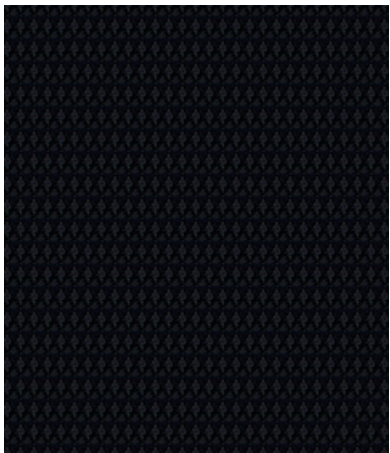
012 Voice



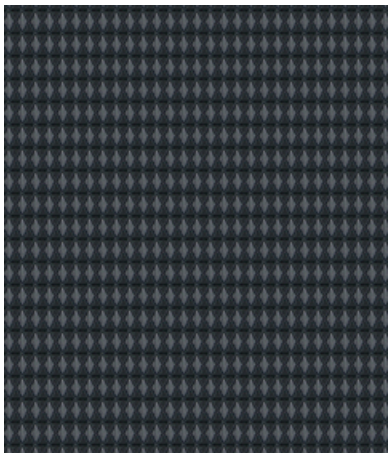
013 Piston



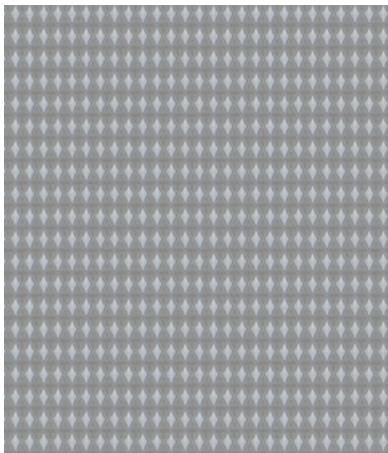
014 Chorus



015 Onyx



016 Codex



017 Repose

Application

Upholstered Walls, Walls

Characteristics

Content: 53% Polyester, 47% Polyethylene

Finish: Stain Repellent

Backing: Acrylic

Width: 54" (137cm)

Bolt Size: 57 yards (52 m)

Weight: 11 oz/ly (300 gr/lm)

Traffic: High Traffic

Country of Origin: Canada

Note: Variations in color and texture are inherent to this textile.

Note on Mold: Intended for use in buildings designed and maintained to avoid moisture on or within walls.

Application must conform to current Installation Guidelines included in each shipment or available at maharam.com.

Price

\$45.50 / C\$69.50 (FOB destination)

C\$65.00 (FOB origin)

Testing

Acoustics: ASTM C423, 0.85 NRC

Flammability: AS/NZS 3837 Adhered

AS/NZS 3837 Unadhered

ASTM E84 Adhered

ASTM E84 Unadhered

BS 476 Unadhered*

EN 13501 Adhered*

EN 13501 Unadhered*

ISO 5660 Adhered

ISO 5660 Unadhered

*passes with additional treatment

Lightfastness: AATCC 16.3, 200+ hours



Maintenance

W/S/B-Clean with water-based cleanser; mild, water-free dry cleaning solvent, or diluted household bleach.



Environmental

Greenguard Gold Certified

FR Free

Warranty

10 years: Walls

3 years: Upholstered Walls.

See Terms and Conditions for more information.

© 2019 Maharam

Last updated May 1, 2025