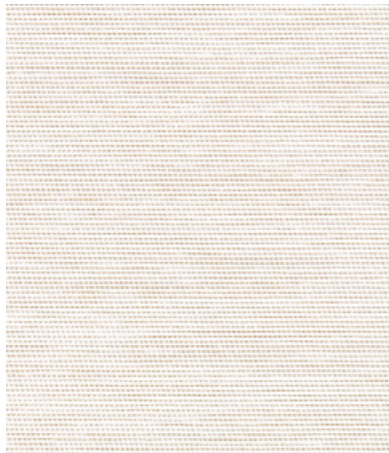




001 Icefall



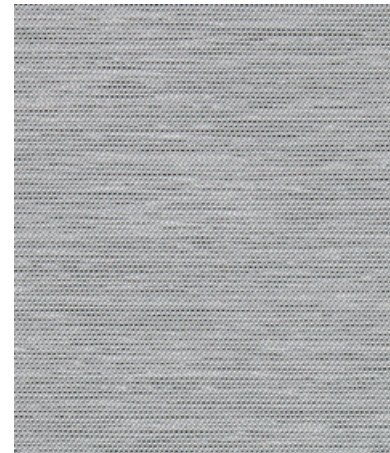
002 Village



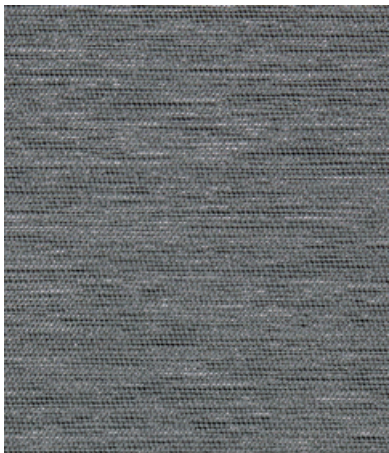
003 Ammonite



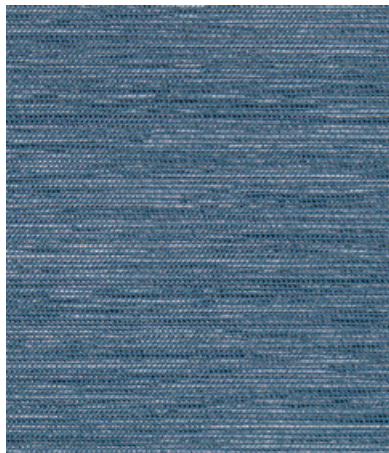
004 Mythical



005 Darkness



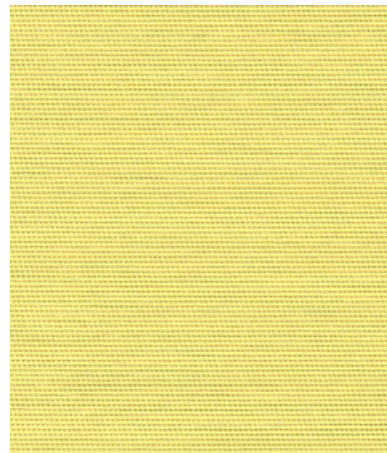
006 Chalkboard



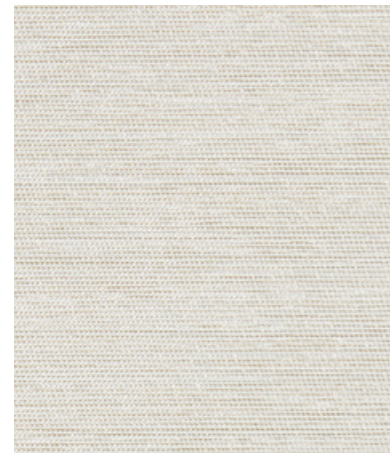
007 Riverway



008 Aventurine



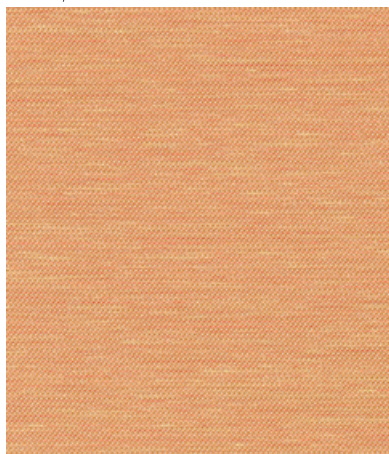
010 Ecstatic



011 Arrowhead



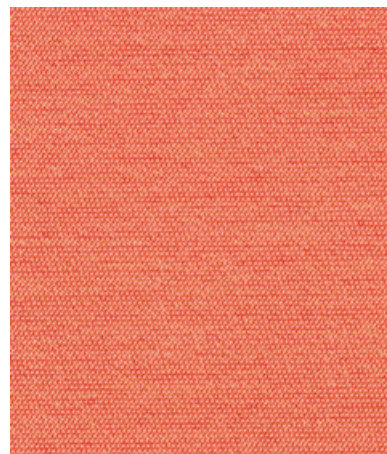
012 Ironbark



013 Merriment



014 Sundress



015 CloudBerry

Application

Upholstered Walls, Walls

Characteristics

Content: 60% Polyester, 40% Post-Consumer Recycled Polyester

Finish: Stain Repellent

Backing: Acrylic

Width: 57" (145cm)

Bolt Size: 30 yards (27 m)

Weight: 16.7 oz/ly (500 gr/lm)

Traffic: High Traffic

Country of Origin: USA

Note on Mold: Intended for use in buildings designed and maintained to avoid moisture on or within walls.

Application must conform to current Installation

Guidelines included in each shipment or available at maharam.com.

Price

\$40.00 / C\$61.75 (FOB destination)

C\$57.25 (FOB origin)

Testing

Acoustics: ASTM C423, 0.85 NRC

Flammability: AS/NZS 3837 Adhered

ASTM E84 Adhered

ASTM E84 Unadhered

BS 476 Adhered*

BS 476 Unadhered*

CAN ULC S102 Adhered

CAN ULC S102 Unadhered

EN 13501 Adhered*

EN 13501 Unadhered*

GB 8624 Adhered*

ISO 5660 Adhered

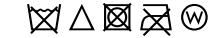
*passes with additional treatment

Lightfastness: AATCC 16.3, 100+ hours



Maintenance

W/S/B-Clean with water-based cleanser; mild, water-free dry cleaning solvent, or diluted household bleach.



Environmental

Greenguard Gold Certified

REACH Compliant

Contains Recycled Content

FR Free

Warranty

10 years: Walls

3 years: Upholstered Walls.

See Terms and Conditions for more information.

© 2020 Maharam

Last updated May 1, 2025