

Specifications

Tithe

300028

Application

Walls

Characteristics

Content: 70% Cellulose, 30% Polyester

Finish: PFAS-Free Water Repellent

Backing: Cellulose / Polyester

Width: 54" (137cm)

Bolt Size: 110 yards (101 m)

Weight: 7.1 oz/ly (200 gr/lm)

Traffic: Moderate Traffic

Country of Origin: Netherlands

Note: Variations in color and texture are inherent to this textile.

Note on Mold: Intended for use in buildings designed and maintained to avoid moisture on or within walls.

Application must conform to current Installation Guidelines included in each shipment or available at maharam.com.

Price

\$40.00 /

Maintenance

X-Vacuum or brush lightly to remove surface dust.



Testing

Flammability: ASTM E84 Adhered

EN 13501 Adhered

Lightfastness: AATCC 16.3, 40+ hours



Specifications

Tithe

300028

maharam

Environmental

- Greenguard Gold Certified
- Healthier Hospitals Compliant
- LBC Red List Free
- REACH Compliant
- Contains Bio-Based Content
- Contains Forest Stewardship Council (Fsc) Certified Content
- FR Free
- Free of Intentionally Added PFAS

Warranty

1 year.

© 2019 Maharam

Complete product information at maharam.com

800.645.3943



001 Unison



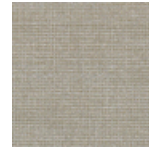
002 Vidalia



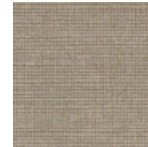
003 Haloumi



004 Parsnip



005 Whelk



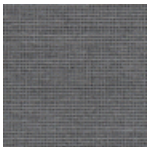
006 Sap



007 Cicada



008 Alcove



009 Medusa