



001 Vanilla



002 Tour



003 Matcha



004 Rainfall



005 Lotus



006 Plum



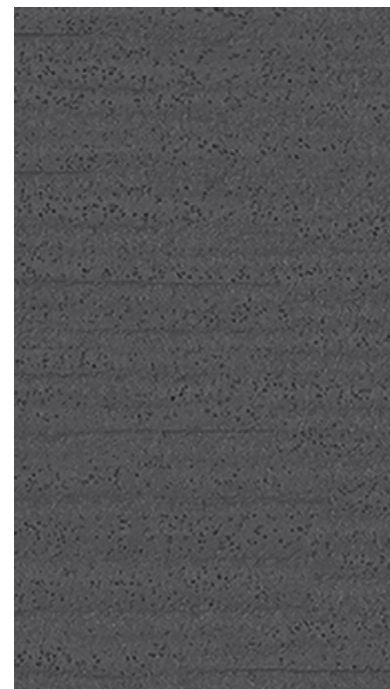
007 Cobweb



008 Locket



009 Cliffside



010 Route

Application

Walls

Characteristics

Content: 100% Non-Phthalate Vinyl
Finish: Protective Topcoat
Backing: Cotton
Width: 52" (132cm)
Repeat: 27" V, 52" H
(69cm V, 132cm H)
Bolt Size: 25 yards (23 m)
Class: Type II
Weight: 32 oz/ly (1000 gr/lm)
Traffic: High Traffic
Country of Origin: USA
Note on Mold: Intended for use in buildings designed and maintained to avoid moisture on or within walls.
Application must conform to current Installation Guidelines included in each shipment or available at maharam.com.

Price

\$38.50 / C\$58.50 (FOB destination)
C\$55.00 (FOB origin)

Testing

Flammability: ASTM E84 Adhered
CAN ULC S102 Adhered

Lightfastness: AATCC 16.3, 200+ hours
☀️🔥💧🌟

Maintenance

W-Clean with water-based cleanser.

Environmental

Greenguard Certified

Warranty

10 years. See Terms and Conditions for more information.

© 2020 Knoll, Inc.

Last updated August 1, 2025