

# Specifications

## Trestle

466613

**maharam**

### Application

Seating

Note: This textile is available as a made-to-order pillow.

### Characteristics

Content: 36% Acrylic, 32% Wool, 23% Cotton, 9% Polyester

Finish: None

Additional Finishes Available: Alta, Alta Food & Beverage, Nanotex, Nanotex with Impermeable Barrier, Stain Repellent Finish

Backing: None

Width: 54" (137cm)

Bolt Size: 25 yards (23 m)

Weight: 32.8 oz/ly (1000 gr/lm)

Country of Origin: Turkey

### Price

\$82.50 / C\$119.75 (FOB destination) / C\$116.25 (FOB origin)

### Maintenance

S-Clean with mild, water-free dry cleaning solvent.



### Testing

Abrasion: ASTM D4157, 100,000 Double Rubs

Note: Abrasion test results exceeding ACT Performance Guidelines are not an indicator of product lifespan.

Multiple factors affect fabric durability and appearance retention.

Flammability: BS 5852 Crib 5\*

CAL 117-2013

EN 1021-1\*

EN 1021-2\*

\*passes with additional treatment

Lightfastness: AATCC 16.3, 40+ hours



Specifications

Trestle

466613

**maharam**

**Environmental**

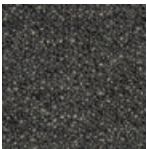
Greenguard Gold Certified  
Oeko-Tex Certified  
LBC Red List Free  
REACH Compliant  
Contains Bio-Based Content  
FR Free  
Free of Intentionally Added PFAS

**Warranty**

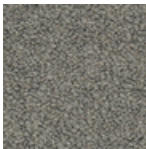
3 years.

© 2023 Maharam

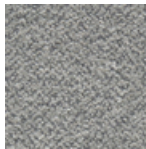
Complete product information at [maharam.com](https://maharam.com)  
800.645.3943



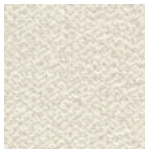
001 Loam



002 Rift



003 Fuse



004 Cumulus



005 Strand



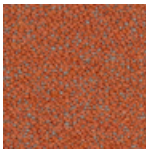
006 Pomelo



007 Tawny



008 Sunstone



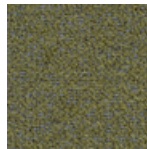
009 Kindling



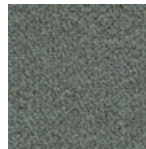
010 Sidecar



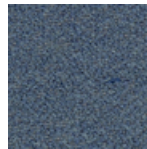
011 Beak



012 Ficus



013 Hinge



014 Bluefish



015 Oblivion