



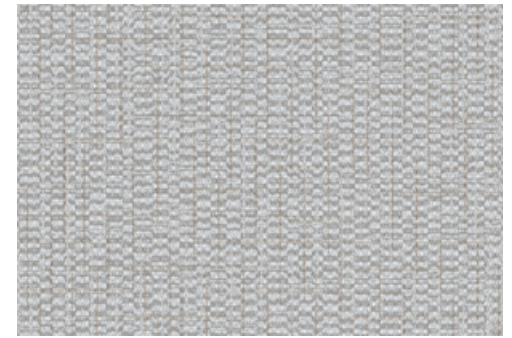
001 Flutter



002 Groove



003 Furrow



004 Sway



005 Leap



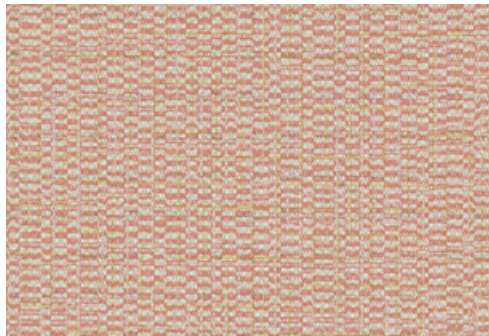
006 Pirouette



007 Bop



008 Twirl



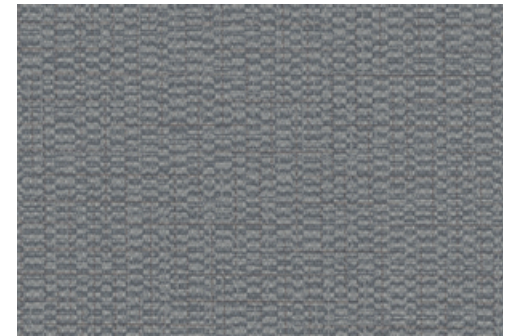
009 Jump



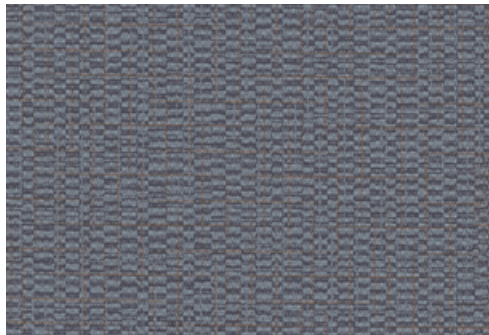
010 Prance



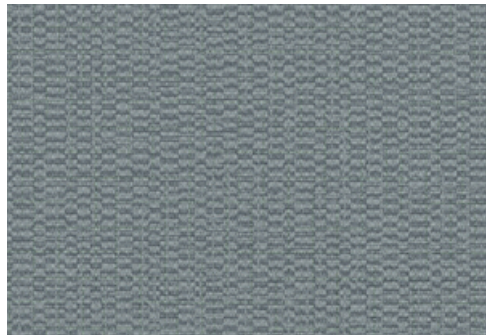
011 Bend



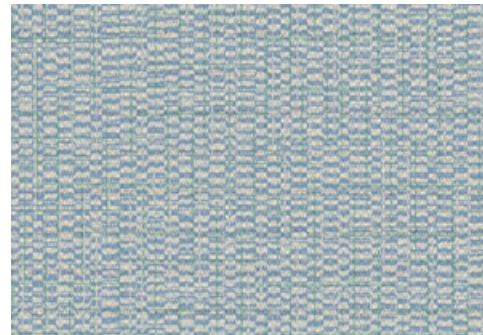
012 Cartwheel



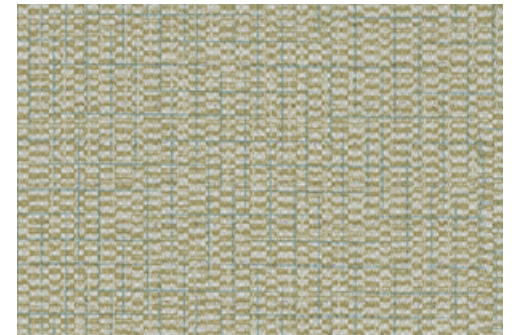
013 Run



014 Dive



015 Backstroke



016 Hike

Application

Walls

Characteristics

Content: 90% Thermoplastic Olefin, 10% Post-Industrial Recycled Glass
Finish: None
Backing: Polyester / Cellulose
Width: 52" (132cm)
Repeat: Non-match
Bolt Size: 30 yards (27 m)
Weight: 18 oz/ly (600 gr/lm)
Traffic: High Traffic
Country of Origin: USA

Price


\$33.00 / C\$51.75 (FOB destination)
C\$47.25 (FOB origin)

Testing

Flammability: ASTM E84 Adhered
CAN ULC S102 Adhered

Lightfastness: AATCC 16.3, 200+ hours


Maintenance

W-Clean with water-based cleanser.


Environmental

Greenguard Gold Certified
LBC Red List Free
Contains Recycled Content
FR Free
Free of Intentionally Added PFAS

Warranty

10 years. See Terms and Conditions for more information.

© 2024 Maharam

Last updated May 1, 2025