

Specifications

Tussle

399954

maharam

Application

Walls

Characteristics

Content: 90% Thermoplastic Olefin, 10% Post-Industrial Recycled Glass

Finish: None

Backing: Polyester / Cellulose

Width: 52" (132cm)

Bolt Size: 30 yards (27 m)

Weight: 18 oz/ly (600 gr/lm)

Traffic: High Traffic

Country of Origin: USA

Note on Mold: Intended for use in buildings designed and maintained to avoid moisture on or within walls.

Application must conform to current Installation Guidelines included in each shipment or available at maharam.com.

Price

\$38.00 / C\$59.00 (FOB destination) / C\$54.50 (FOB origin)

Maintenance

W-Clean with water-based cleanser.



Testing

Flammability: ASTM E84 Adhered

Lightfastness: AATCC 16.3, 200+ hours



Specifications
Tussle
399954

maharam

Environmental

Greenguard Gold Certified
Healthier Hospitals Compliant
LBC Red List Free
Contains Recycled Content
FR Free
Free of Intentionally Added PFAS

Warranty

10 years.

© 2017 Maharam

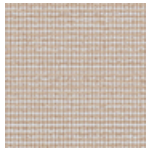
Complete product information at maharam.com
800.645.3943



001 Rye



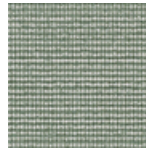
004 Whisper



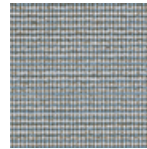
005 Jog



006 Wander



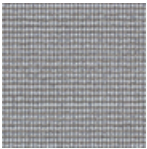
007 Poplar



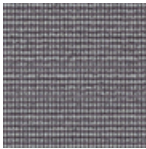
009 Canal



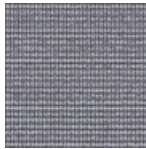
011 Fade



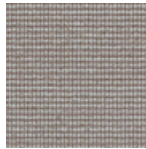
012 Ostrich



013 Whim



014 Ode



016 Lark