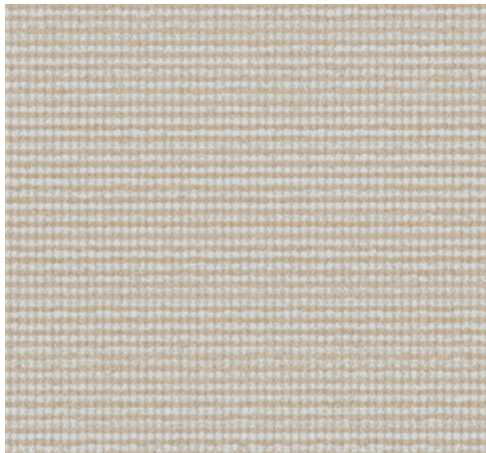
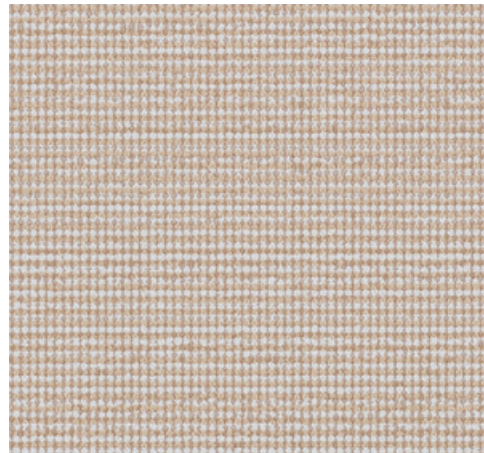


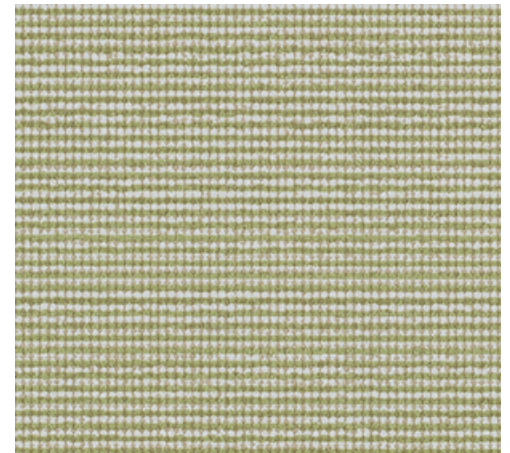
001 Rye



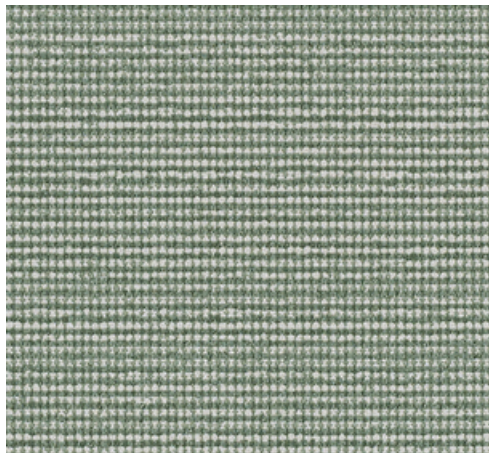
004 Whisper



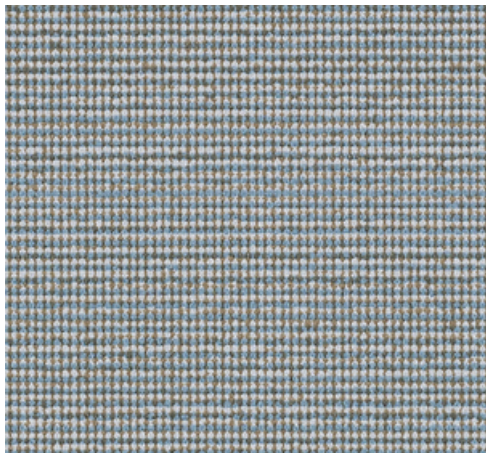
005 Jog



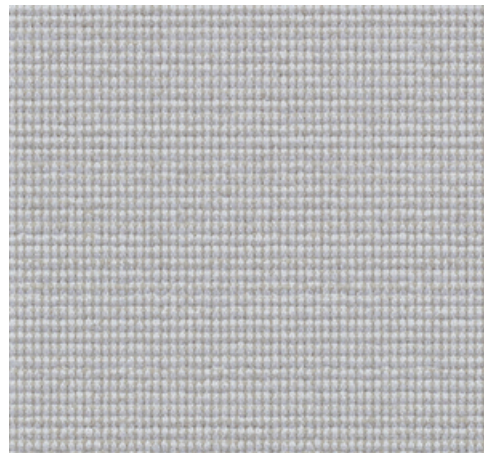
006 Wander



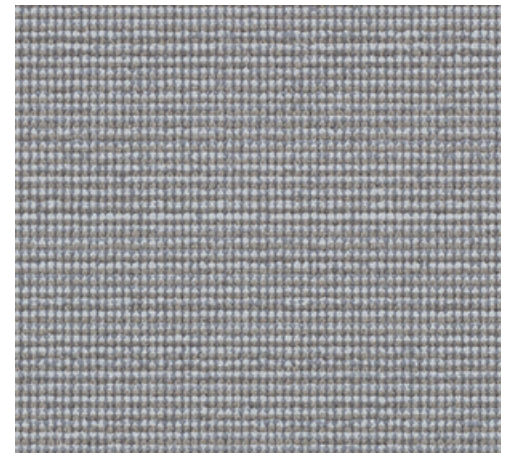
007 Poplar



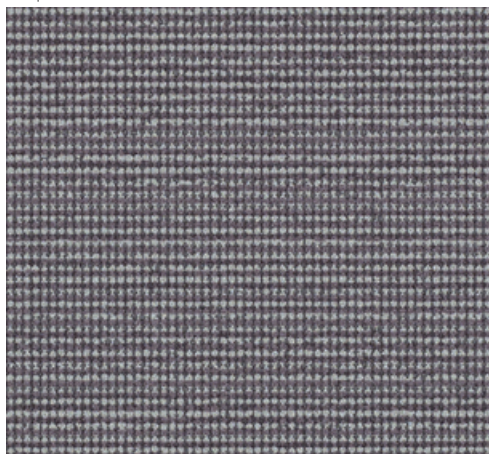
009 Canal



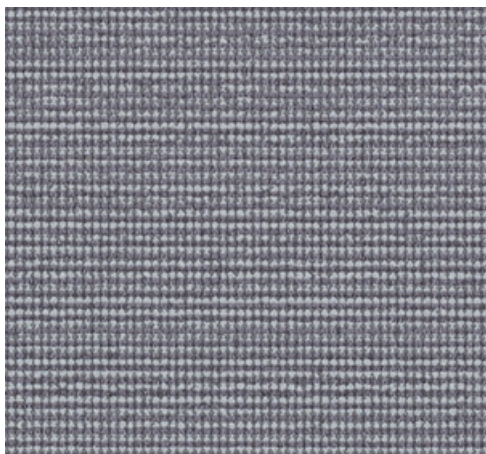
011 Fade



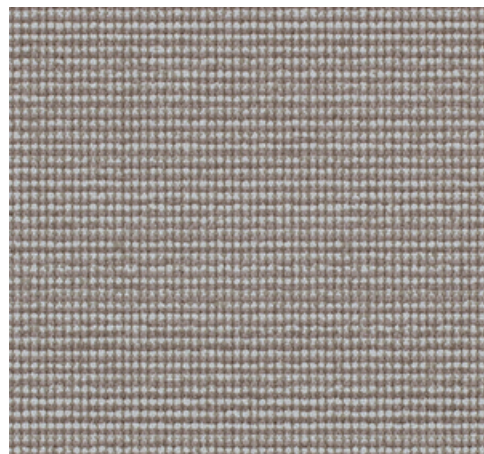
012 Ostrich



013 Whim



014 Ode



016 Lark

399954 Tussle

maharam

Application

Walls

Characteristics


Content: 90% Thermoplastic Olefin, 10% Post-Industrial Recycled Glass
Finish: PFAS-Free Protective Topcoat
Backing: Polyester / Cellulose
Width: 52" (132cm)
Bolt Size: 30 yards (27 m)
Weight: 18 oz/ly (600 gr/lm)
Traffic: High Traffic
Country of Origin: USA
Note on Mold: Intended for use in buildings designed and maintained to avoid moisture on or within walls.
Application must conform to current Installation Guidelines included in each shipment.

Price


\$38.00 / C\$58.00 (FOB destination)
C\$54.50 (FOB origin)

Testing

Flammability: ASTM E84 Adhered

Lightfastness: AATCC 16.3, 200+ hours


Maintenance

W-Clean with water-based cleanser.


Environmental

Greenguard Gold Certified
Healthier Hospitals Compliant
LBC Red List Free
Contains Recycled Content
FR Free
Free of Intentionally Added PFAS

Warranty

10 years. See Terms and Conditions for more information.

© 2017 Maharam

Last updated August 31, 2025