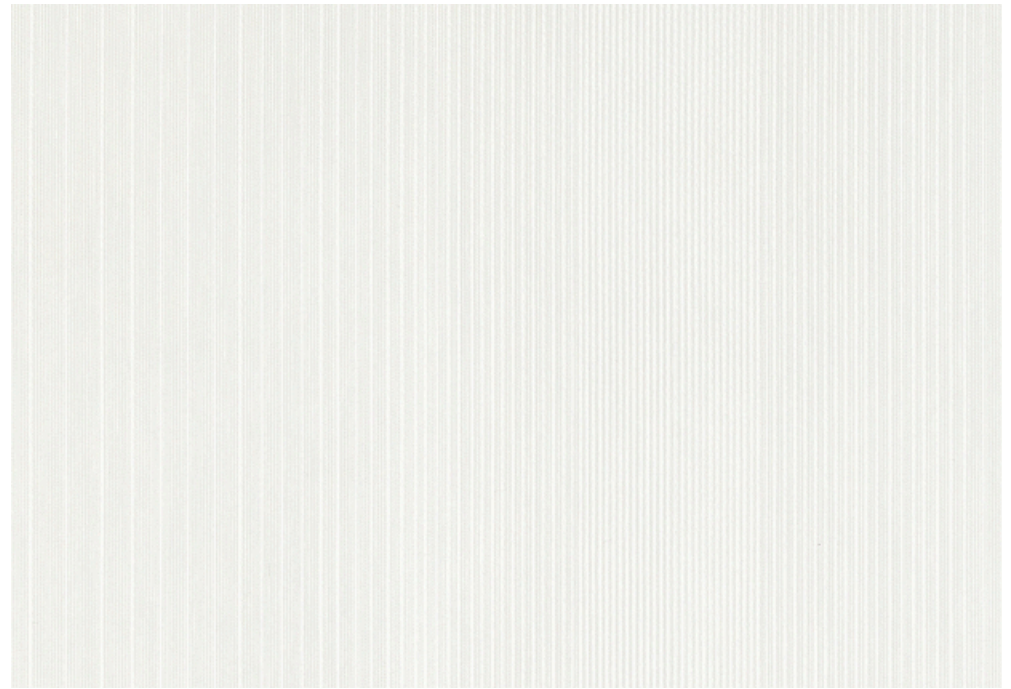




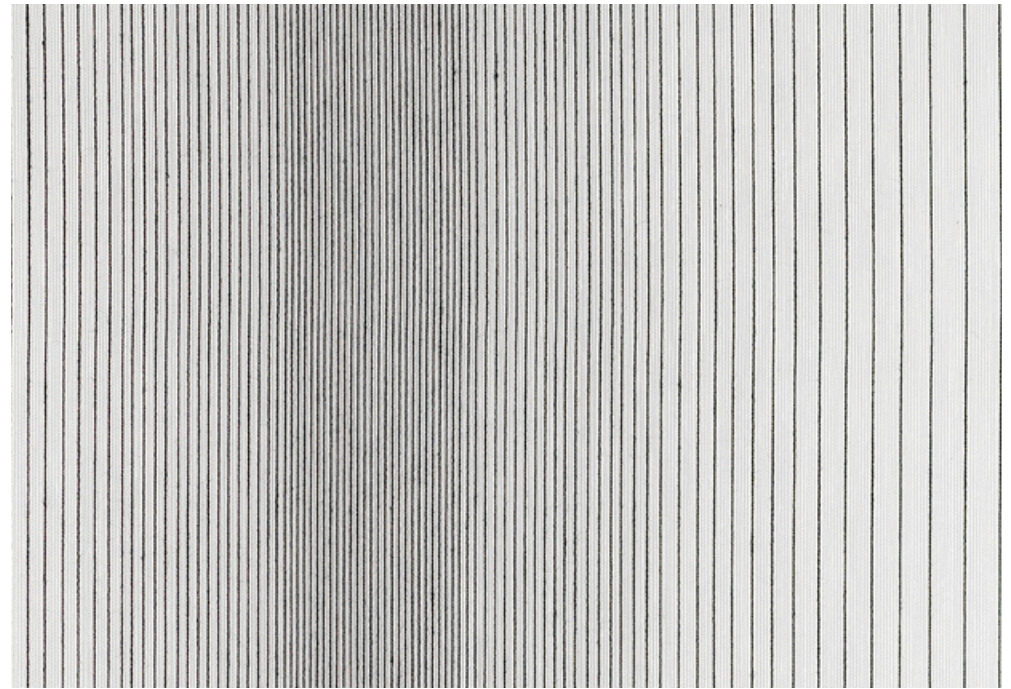
001 Pristine



002 Altitude



003 Fade



004 Swell

283775 Vellum

maharam

Application

Windows

Characteristics

Content: 100% Trevira CS Polyester
Finish: None
Backing: None
Width: 122" (310cm)
Repeat: 9 1/2" V
(24cm V)
Railroaded Repeat: 9 1/2" H
(24cm H)
Bolt Size: 66 yards (60 m)
Weight: 6.1 oz/ly (200 gr/lm)
Country of Origin: Germany
Note: Shown railroaded.

Price




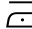

\$108.00 / C\$158.00 (FOB destination)
C\$154.50 (FOB origin)

Testing

Flammability: BS 5867
CAN ULC S109
GB 8624
JFRA 45°
NFPA 701

Lightfastness: AATCC 16.3, 60+ hours
   

Maintenance

Dry clean only.
    

Environmental

Greenguard Gold Certified
Oeko-Tex Certified
LBC Red List Free
REACH Compliant
Free of Intentionally Added PFAS

Warranty

1 year. See Terms and Conditions for more information.

© 2016 Maharam

Last updated August 1, 2025