



001 Bonbon



002 Sundry



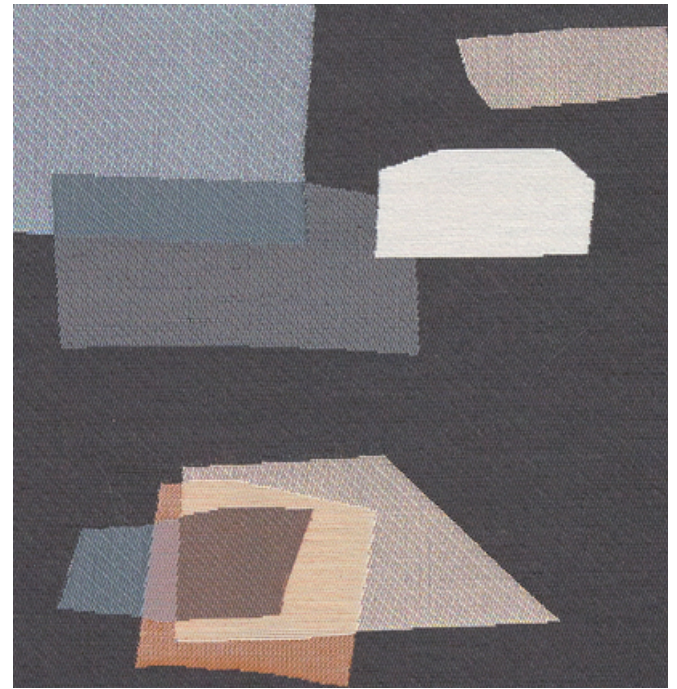
003 Luminary



004 Resonant



005 Topograph



006 Kalamata

466545 Washi by Hella Jongerius

**maharam**



Design

Hella Jongerius

Application

Seating  
Note: This textile is available as a made-to-order pillow.

Characteristics

Content: 55% Cotton, 22% Solution-Dyed Nylon, 15% Linen, 8% Post-Consumer Recycled Polyester  
Finish: PFAS-Free Water Repellent  
Additional Finishes Available: Alta, Alta Food & Beverage, Nanotex, Nanotex with Impermeable Barrier, Stain Repellent Finish  
Backing: Acrylic  
Width: 54" (137cm)  
Repeat: 25 3/4" V, 28 1/4" H (65cm V, 72cm H)  
Bolt Size: 30 yards (27 m)  
Weight: 22.3 oz/ly (700 gr/lm)  
Country of Origin: USA

Price

\$139.00 / C\$202.25 (FOB destination)  
C\$198.75 (FOB origin)

Testing

Abrasion: ASTM D4157, 65,000 Double Rubs

Flammability: BS 5852 Crib 5\*  
CAL 117-2013  
EN 1021-1\*  
EN 1021-2\*  
GB/T 17591\*

\*passes with additional treatment

Lightfastness: AATCC 16.3, 40+ hours



Maintenance

S-Clean with mild, water-free dry cleaning solvent.  
☒☒☒☒Ⓟ

Environmental

Greenguard Gold Certified  
LBC Red List Free  
Contains Bio-Based Content  
FR Free  
Free of Intentionally Added PFAS

Warranty

3 years. See Terms and Conditions for more information.

© 2022 Maharam

Last updated August 21, 2025