



001 Nested



002 Fleece



003 Burnished



004 Cochineal



005 Sepia



006 Orpiment



007 Cordite



008 Isabelline



009 Harmattan



010 Pointbreak



011 Bustle



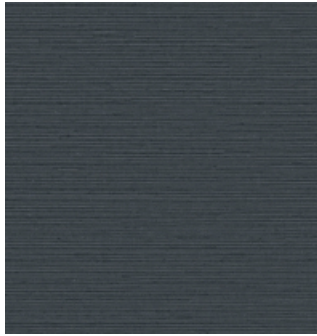
012 Delve



013 Landslide



014 Froth



015 Magpie



016 Pompadour



017 Washed



018 Ceruse



019 Glaucous



020 Ashen



021 Submerge



022 Achromatic

Application

Walls

Characteristics


Content: 90% Thermoplastic Olefin, 10% Post-Industrial Recycled Glass
Finish: PFAS-Free Protective Topcoat
Backing: Polyester / Cellulose
Width: 52" (132cm)
Repeat: Non-match
Bolt Size: 30 yards (27 m)
Weight: 18 oz/ly (600 gr/lm)
Traffic: High Traffic
Country of Origin: USA
Note on Mold: Intended for use in buildings designed and maintained to avoid moisture on or within walls.
Application must conform to current Installation Guidelines included in each shipment or available at maharam.com.

Price


\$34.00 / C\$52.25 (FOB destination)
C\$48.75 (FOB origin)

Testing

Flammability: ASTM E84 Adhered
CAN ULC S102 Adhered

Lightfastness: AATCC 16.3, 200+ hours


Maintenance

W-Clean with water-based cleanser.


Environmental

Greenguard Gold Certified
Contains Recycled Content
FR Free
Free of Intentionally Added PFAS

Warranty

10 years. See Terms and Conditions for more information.

© 2025 Maharam

Last updated June 27, 2025